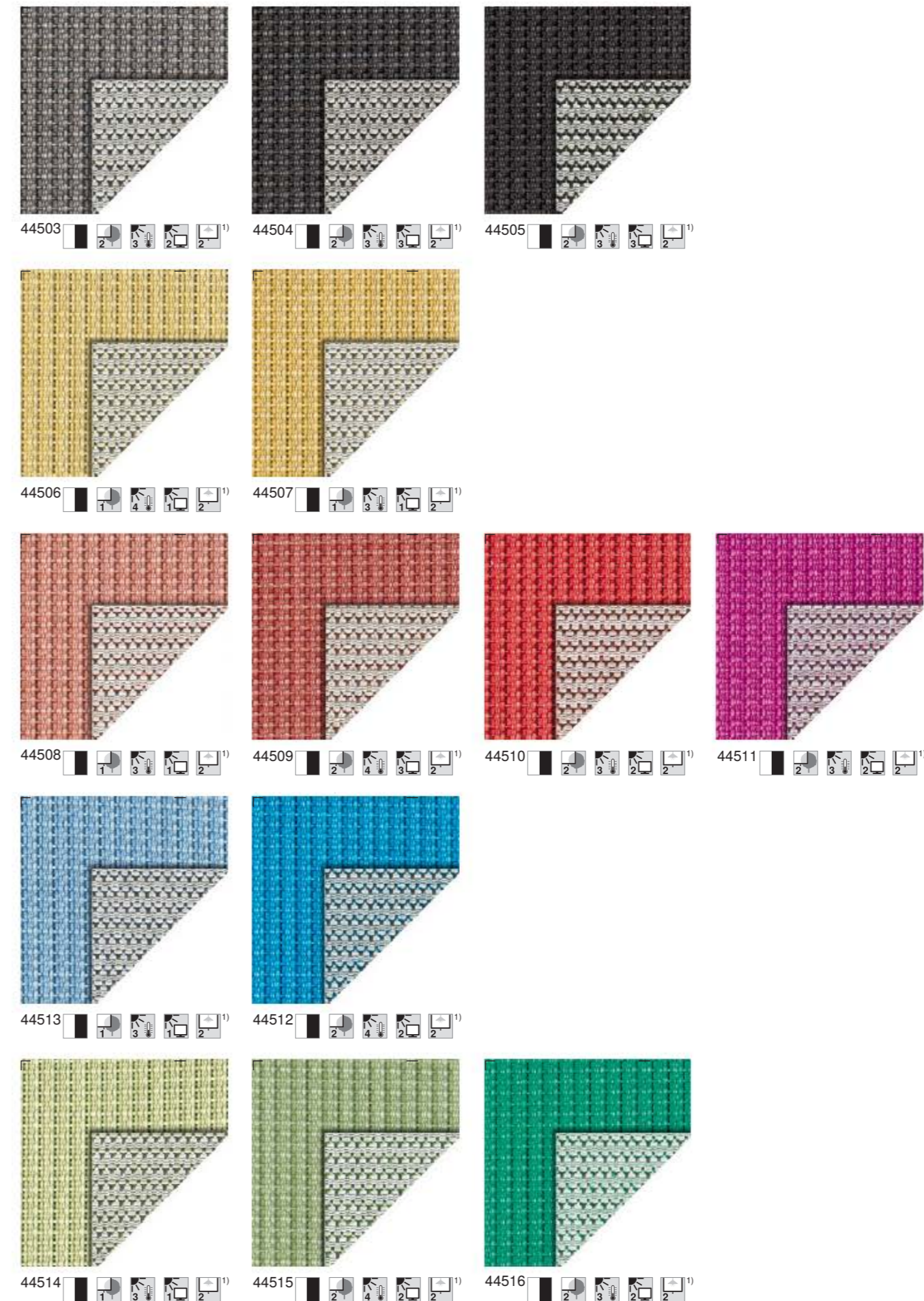


## WAREMA SecuTex fabric A2

Attention:

For the designs 44503-44516, extended delivery times and a surcharge are due!



Colour deviations are due to printing technology.  
1) Please note that the values may deviate when the products are used indoors.

## WAREMA SecuTex fabric A2

Design no.	External colour (for two-tone designs)*	Field of application	Opening factor in %	Price range	View out	Summer Thermal protection <sup>3)</sup>	Glare control <sup>3)</sup>	Visual privacy <sup>3)</sup>	Light reflectance in %	Light transmittance in %	Light absorption coefficient in %	Solar reflectance in %	Solar transmittance in %	Solar absorptance in %	Colour rendering index	Page
44500	White	inside and outside	2	4/ 5 <sup>2)</sup>	1	4	1	2	55	10	35	52	9	39	97	2
44500	Silver <sup>1)</sup>	inside and outside	2	4/ 5 <sup>2)</sup>	1	4	1	2	49	10	41	50	9	41	97	2
44501	Silver <sup>1)</sup>	inside and outside	2	4/ 5 <sup>2)</sup>	2	4	2	2	45	6	49	46	6	48	99	2
44501	Silver back with silicone	inside and outside	2	4/ 5 <sup>2)</sup>	2	4	2	2	39	6	55	39	6	55	99	2
44502	Grey	inside and outside	2	4/ 5 <sup>2)</sup>	2	4	2	2	24	4	72	27	5	68	98	2
44502	Silver <sup>1)</sup>	inside and outside	2	4/ 5 <sup>2)</sup>	2	4	2	2	41	4	55	43	5	52	98	2
44503	Grey <sup>1)</sup>	inside and outside	2	on request	2	3	2	2	17	6	77	24	7	69	99	3
44504	Grey <sup>1)</sup>	inside and outside	2	on request	2	3	3	2	8	4	88	15	5	80	98	3
44505	Grey <sup>1)</sup>	inside and outside	2	on request	2	3	3	2	6	4	90	13	4	83	98	3
44506	Yellow <sup>1)</sup>	inside and outside	2	on request	1	4	1	2	51	9	40	48	9	43	91	3
44507	Yellow <sup>1)</sup>	inside and outside	2	on request	1	3	1	2	45	9	46	43	9	48	85	3
44508	Red <sup>1)</sup>	inside and outside	2	on request	1	3	1	2	28	8	64	38	10	52	83	3
44509	Red <sup>1)</sup>	inside and outside	2	on request	2	4	3	2	18	5	77	34	7	59	78	3
44510	Red <sup>1)</sup>	inside and outside	2	on request	2	3	2	2	14	5	81	31	10	59	39	3
44511	Red <sup>1)</sup>	inside and outside	2	on request	2	3	2	2	13	5	82	34	10	56	52	3
44512	Blue <sup>1)</sup>	inside and outside	2	on request	2	4	2	2	22	5	73	36	7	57	56	3
44513	Blue <sup>1)</sup>	inside and outside	2	on request	1	3	1	2	36	8	56	44	10	46	89	3
44514	Green <sup>1)</sup>	inside and outside	2	on request	1	3	1	2	52	11	37	47	10	43	96	3
44515	Green <sup>1)</sup>	inside and outside	2	on request	2	4	2	2	34	7	59	39	8	53	94	3
44516	Green <sup>1)</sup>	inside and outside	2	on request	2	3	2	2	21	6	73	26	6	68	62	3
44600	White	inside	4	4	1	1	1	2	48	15	37	46	14	40	99	2
44600	Silver <sup>1)</sup>	inside	4	4	1	1	1	2	43	15	42	44	14	42	99	2
44601	Silver	inside	4	4	2	1	2	2	47	7	46	48	7	45	98	2
44602	Grey	inside	4	4	2	1	3	2	18	5	77	21	6	73	99	2
44602	Silver <sup>1)</sup>	inside	4	4	2	1	3	2	41	5	54	43	6	51	99	2

Manufacturer's data according to DIN EN 14501 and DIN EN 410  
The photometric data are recorded by reputable institutes and are considered to be standard values. Tolerances in the measurement procedure and batch-related variations from the samples can lead to deviations in the determined values for which we cannot assume liability.  
No responsibility is taken for the accuracy of this information. Small colour deviations may occur!  
\* For two-tone designs, please note which colour is on the outside.  
1) If the external colour is not specified during ordering, we will supply the marked colour on the outside.  
2) In the savings collection the design corresponds to price range 2; in the inside collection it corresponds to price range 4.  
3) Please note that the values may deviate when the products are used indoors.

## WAREMA SecuTex fabric A2

- non-flammable in acc. with DIN 4102-A2
- halogen-free and PVC-free
- suitable for use in humid environments
- wipe with a moist cloth

Web width 200 cm, fabric weight approx. 290 g/m<sup>2</sup>  
(Design 44600-44602) or 330 g/m<sup>2</sup>

When ordering two-tone designs, please state which colour you would like to have on the outside of your sun shading system. If no details are specified, we will supply the defined standard.

## Thermal and visual fabric properties in accordance with DIN EN 14501

### Summer thermal protection

#### Use for window awnings

The capacity of the external fabric to prevent heat build-up in the room. Thermal protection glass ( $U_g = 1.2 \text{ W/(m}^2\text{K)}$ ;  $g = 59\%$ ) is used for classification, the value  $g_{\text{tot}}$  is calculated in accordance with DIN EN 13 363-1.

Picto	Description
	Not relevant for external fabrics.
	Not relevant for external fabrics.
	The sun shading system effectively prevents heat build-up in the room.
	The sun shading system very effectively prevents heat build-up in the room.
	The sun shading system maximally prevents heat build-up in the room.

### Glare control

The capacity of the fabric to reduce solar radiation on the workspace and prevent direct view of the sun.

Picto	Description	Remarks on facade side
	No glare control.	
	Glare control is very limited and only suitable for few applications, e.g. north facade, when glare from opposite facades is impossible.	Suitable for north side; east, south and west side not suitable for computer workstations
	Glare control is almost always ensured and only insufficient for few applications, e.g. computer workstations directly facing the window.	Suitable for east, south, west facade
	Glare control is virtually always ensured and only insufficient for few applications, e.g. computer workstations directly facing the window and CAD applications.	Suitable for east, south, west facade
	Full glare control independent of outside conditions such as workstation orientation, e.g. black-out qualities. Please note that no view out is possible.	Suitable for east, south, west facade

## Visual privacy

The capacity of the fabric to prevent a person inside the room from being seen from the outside under normal night-time lighting conditions.

Picto	Description
	No visual privacy is ensured. People are clearly discernible.
	Only little visual privacy is ensured. People are still discernible.
	Visual privacy is ensured, but shadows can always be seen and people can be discerned under unfavourable lighting conditions.
	Visual privacy is minimally limited. Shadows can only be discerned at a short distance to the fabric, e.g. people inside the room at a distance of < 1 m.
	Complete visual privacy.

## View out

The capacity of the fabric to allow a view out when extended.

Picto	Description
	There is no view out.
	The view out is extremely limited. Silhouettes can be discerned.
	The view out is limited. Silhouettes are easy to see.
	The view out is minimally limited, e.g. people can be seen at a 10 m distance.
	The view out is nearly unobstructed.

## Terms and definitions

**Light reflectance**  $\rho_r$  = the percentage of the light reaching the awning (wavelength range from 380 nm to 780 nm) which is reflected.

**Light transmittance**  $\tau_v$  = the percentage of the light reaching the awning which passes through (how bright is it underneath the awning).

**Light absorption coefficient**  $\alpha_a$  = the percentage of the light reaching the awning which is absorbed.

**Solar reflectance**  $\rho_{\text{so}}$  = the percentage of the total radiation reaching the awning (UV + light + infrared, wavelength range from 300 nm to 2500 nm) which is reflected.

**Solar transmittance**  $\tau_{\text{so}}$  = the percentage of the total radiation reaching the awning which passes through.

**Solar absorptance**  $\alpha_s$  = the percentage of the total radiation reaching the awning which is absorbed and transformed into heat.

**Colour rendering index**  $R_a$  = how great the authenticity of the colour rendering is. The higher the colour rendering index  $R_a$ , the more authentically colours are rendered. The value can be a maximum of 100.

# WAREMA SecuTex fabric A2

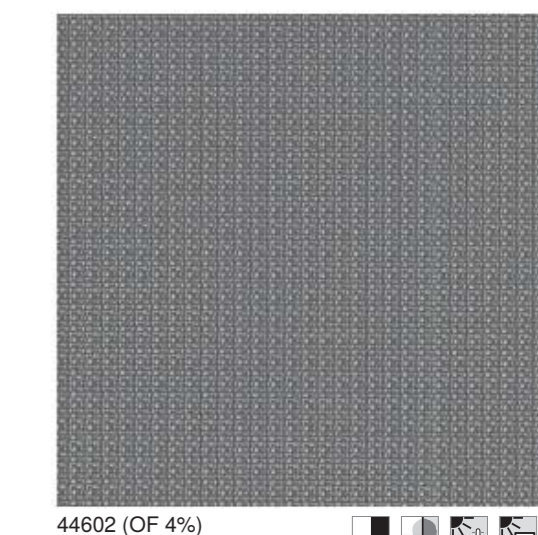
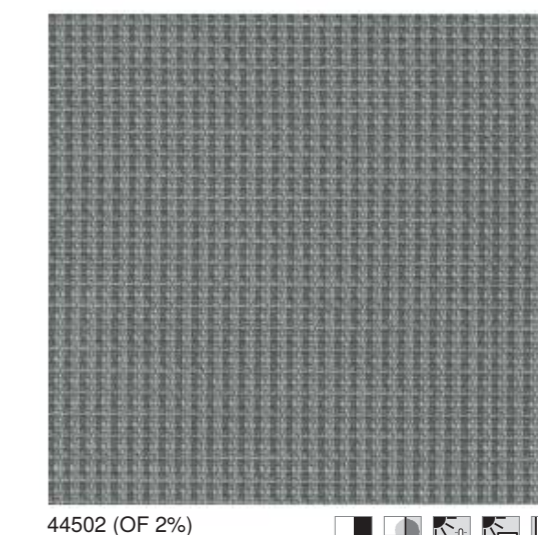
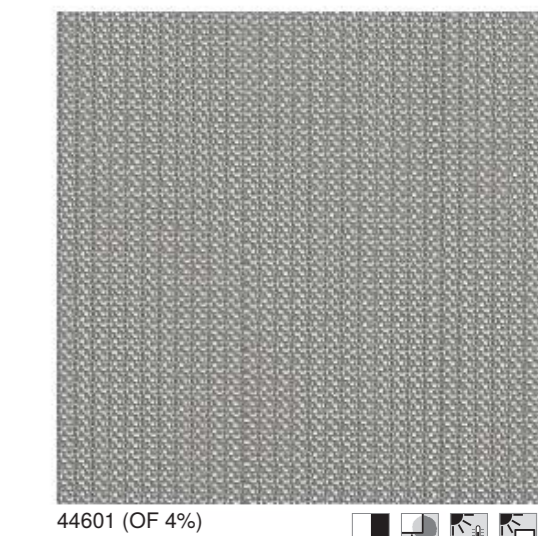
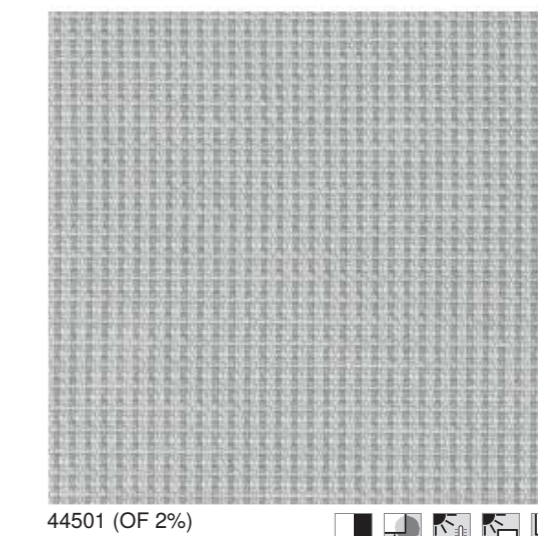
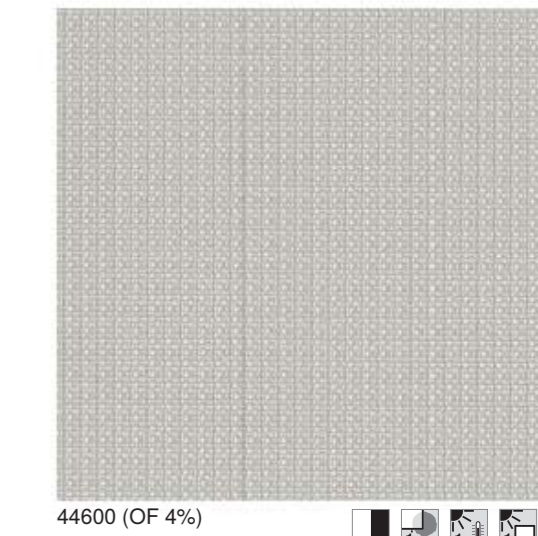
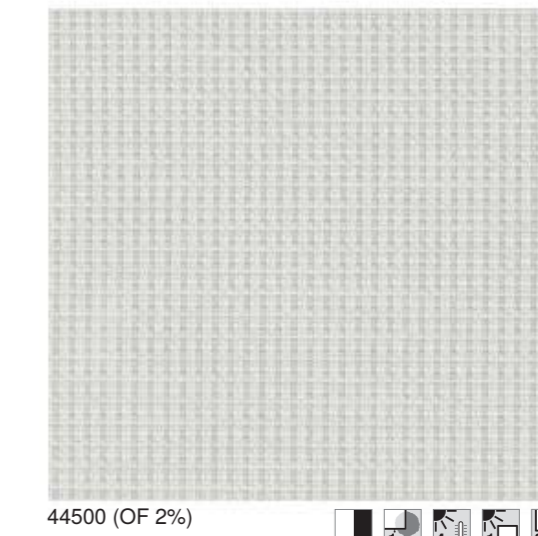
Colour chart

*Der SonnenLichtManager*



Valid from 01.04.2018

## WAREMA SecuTex fabric A2



Manufacturer's data according to DIN EN 410  
The photometric data are recorded by reputable institutes and are considered to be standard values. Tolerances in the measurement procedure and batch-related variations from the samples can lead to deviations in the determined values for which we cannot assume liability.  
1) Please note that the values may deviate when the products are used indoors.

2019537/04.2018