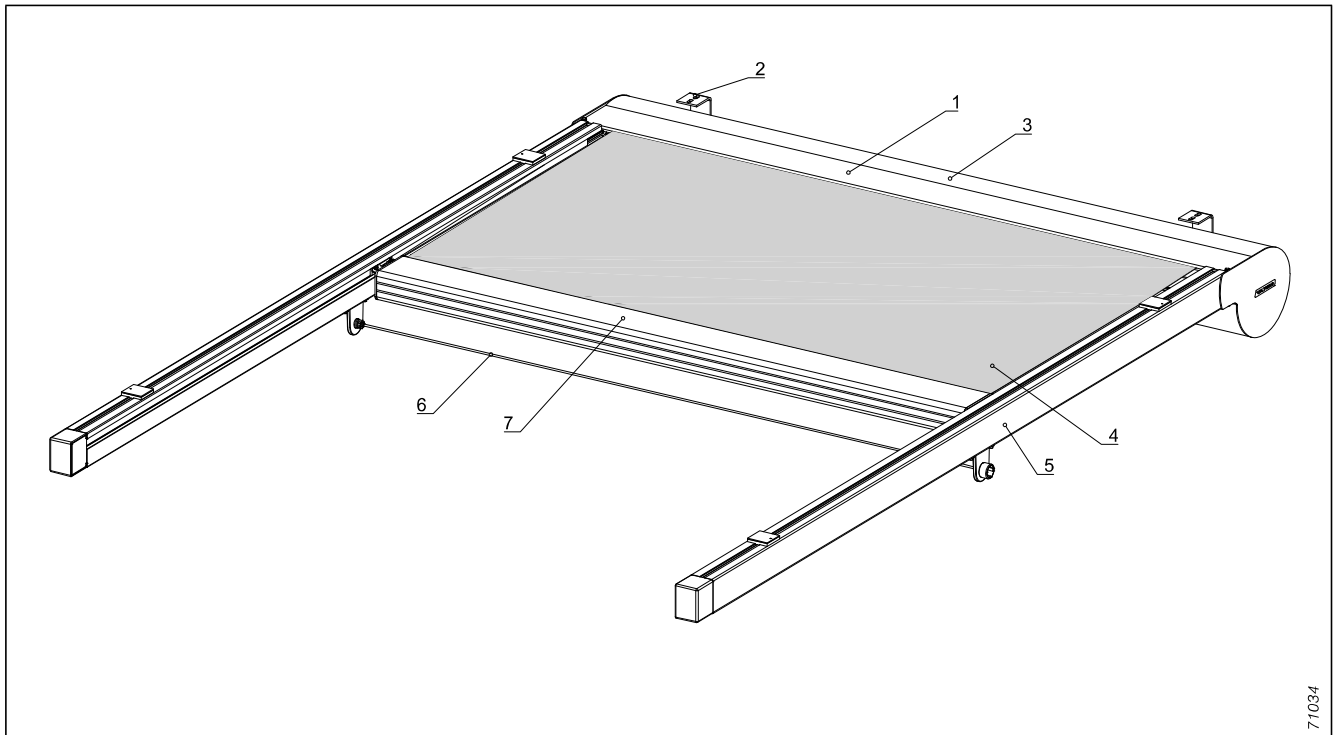


Description

Conservatory awning Climara W9



71034

fig. 233: Conservatory awning W9

- 1 Cover panel
- 2 Ceiling bracket
- 3 Shaft
- 4 Fabric
- 5 Lateral guidance with toothed belt
- 6 Guy rope crosswise
- 7 Front rail

Application

Internal sun shading system under glass for shading conservatories, patio roofs and pergolas.

Function principle: back-pull system via toothed belt with steel reinforcement.

Optimum fabric tension through pre-tensioning of the spring mechanism.

Operation

Basic motor, 230 V, 50 Hz

WM REA with electronic limit switch-off (optionally with EWFS/WMS Plug receiver)

EWFS radio motor, 230 V, 50 Hz (optional)

W-WM with electronic limit switch-off

WMS radio motor, 230 V, 50 Hz (optional)

WMS-WM with electronic limit switch-off

More information about drives from page 275.

Cover panel (1)

two-piece, closed at the front, incl. brush seal

Material: aluminium, extruded

Dimensions (WxH): 199x159 mm

Surface: powder-coated

Fixing: using a ceiling bracket

Ceiling bracket (2)

Material: stainless steel

Dimensions (WxH): 40x75.5 or 129 mm

Surface: plain

Shaft (3)

Fabric shaft

Material: steel, galvanised

Material thickness: 1 mm

Dimensions (Ø): 85 mm

Profile: groove tube

Surface: plain

Motor shaft

Material: aluminium

Material thickness: 1.25 mm

Dimensions (Ø): 56 mm

Profile: round profile

Surface: plain

Description

Conservatory awning Climara W9

Fabric (4)

Fabric qualities: Standard/Lumera acrylic fabric
Perfora acrylic fabric
Soltis 92 fabric
Twilight Pearl/Metal
More information about the fabrics on page 266

Designs: according to current WAREMA awning collection

Special fabrics not included in our current awning collection are only available upon request and at a surcharge.

Lateral guidance (5)

with back-pull system via toothed belt

with mounting groove

Material: aluminium, extruded
Dimensions (WxH): 45x64 mm
Surface: powder-coated
Fixing: brackets, from page 154
Pulling element: Toothed belt with steel inserts
End cap: powder-coated with deflection bearing

Guy rope crosswise (6)

with order lengths from 3001 mm

Material: steel, resistant to corrosion
Coating: polyamide
Colour: black

Front rail (7)

Material: aluminium, extruded
Dimensions (WxH): 94 x 54 mm
(96 x 62 mm in model with valance roller blind)
Surface: powder-coated

Fixing and connecting parts

within the awnings

Material: A2 steel or aluminium

Colours

Powder coating of aluminium parts with chrome-free pre-treatment according to valid RAL CLASSIC colour chart (except camouflage and luminous colours) or in six DB colours as well as eight textured colours, four anodised-look colours (WC31 – WC34) and further colours according to WAREMA Colour World (in WAREMA colour specification). Other colour specifications and special colours are available on request and are subject to surcharge.

Checklist

- Provide drawings of the conservatory or the patio roof or provide a sketch and also a photo (if possible)
- Fabric colour and quality
- Frame colour
- Type of guide rail brackets
- Determine position of drive (operation side of cover panel in direction of movement)
- Arrange for supply line on-site
- Arrange for housing of plug-in connector

Safety instructions

- In gyms, multi-purpose halls or similar, the awning must be protected against shocks (ball games), impacts etc. by appropriate features like fences, nets etc.
- Do not use in indoor pools due to the chlorine atmosphere.
- It is imperative that the installation instructions and the relevant appendices are adhered to.
- Accident prevention regulations from trade associations must be observed.
- Specifications of the manufacturers of screw anchors and fixing materials must be observed.
- The fixing points have to be checked once a year!

Information on operation and electrical connection:

The following connection conditions must be taken into consideration when controlling electronic motors:

1. It must be ensured that the drives are to be operated via locked switching elements. However, the drives switch to programming mode, if synchronous voltage is applied to the up and down running direction. In this case the built-in electronics lose their saved limit positions and await new programming.
2. Switching devices with the so-called 3-wire conductor technology (e.g. Rademacher timer clip) cannot be used because these devices draw their operating voltage from the drive and the electronics in the motors do not build up enough voltage.

If both conditions have been met, the electronic motors can be operated with any roller shutter controller or bus system (via actuators).

Weights/run times/guide rail/cover panels

Conservatory awning Climara W9

Diagram for determining run time of a conservatory awning W9

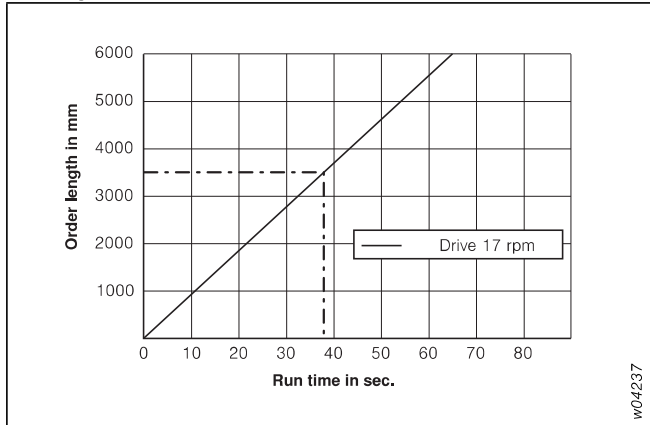


fig. 234: Diagram for determining run time

How to read the diagram:

Awning with order length of 3500 mm and drive speed of 17 rpm has a run time of approx. 38 sec.

Guide rail 45x64 mm

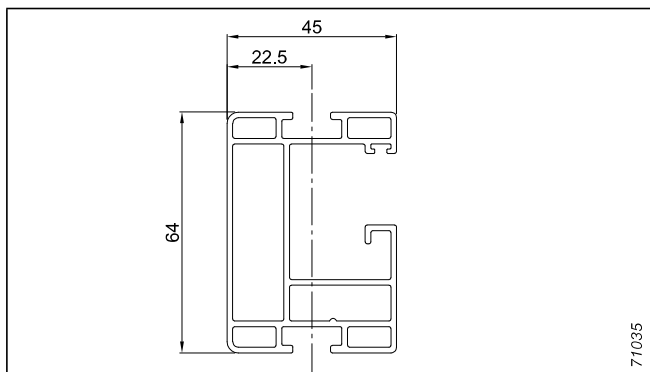


fig. 235: Guide rail

Diagram for determining the weight of a conservatory awning W9 (motorised unit)

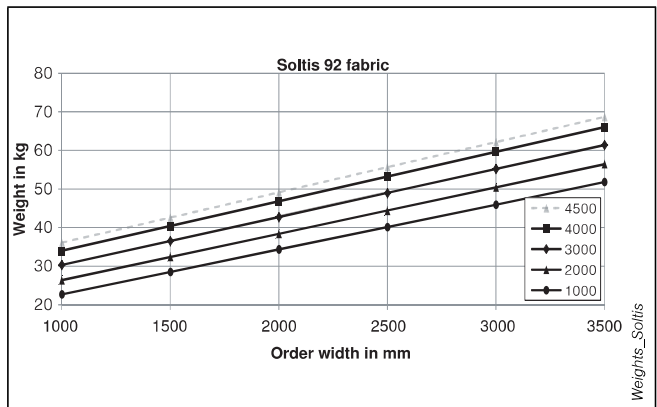
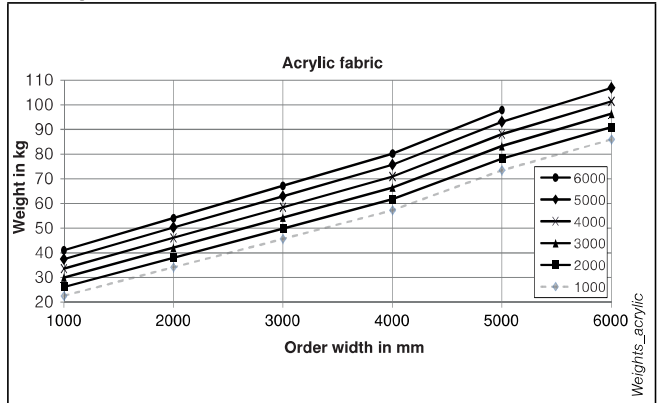


fig. 236: Diagrams for determining weights for W9

How to read the diagram:

Awning with order length of 3000 mm, order width of 2000 mm and Soltis 92 fabric has a weight of approx. 43 kg.

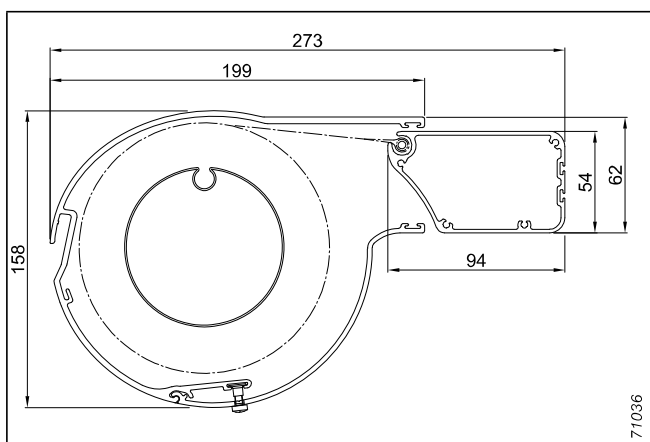


fig. 237: Cover panel with front rail

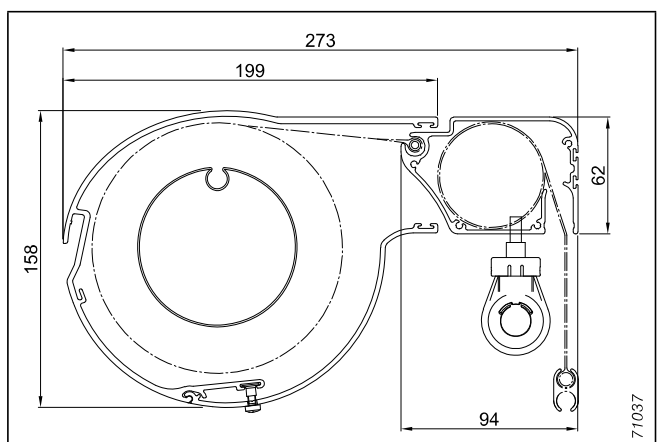


fig. 238: Cover panel with front rail for valance roller blind

Construction limit values/definitions

Conservatory awning Climara W9

Construction limit values in mm W9

Internal sun shading systems	Type of fabric	Individual units
Max. width	Acrylic – all qualities –	6000 ¹⁾
	Soltis 92 fabric	3500
	Twilight Pearl/Metal	6000 ¹⁾
Min. width	Acrylic – all qualities –	770
	Soltis 92 fabric	770
	Twilight Pearl/Metal	770
Max. length	Acrylic – all qualities –	6000 ²⁾
	Soltis 92 fabric	4500
	Twilight Pearl/Metal	6000 ²⁾
Min. length	Acrylic – all qualities –	750
	Soltis 92 fabric	750
	Twilight Pearl/Metal	750
Max. surface (m ²)	Acrylic – all qualities –	30
	Soltis 92 fabric	16
	Twilight Pearl/Metal	30

¹⁾ Max. width with valance roller blind 5000 mm

²⁾ Note max. area!

Note:

Conservatory awnings type W9 are only available as individual units, i.e. no coupled curtains and no motor/end bearing situations are possible! Each awning requires 2 single guide rails.

Definitions

The drive end or operation side is always seen from the cover panel in extension direction.

Order width = from one guide rail fixing axis to the next fixing axis = axial dimension

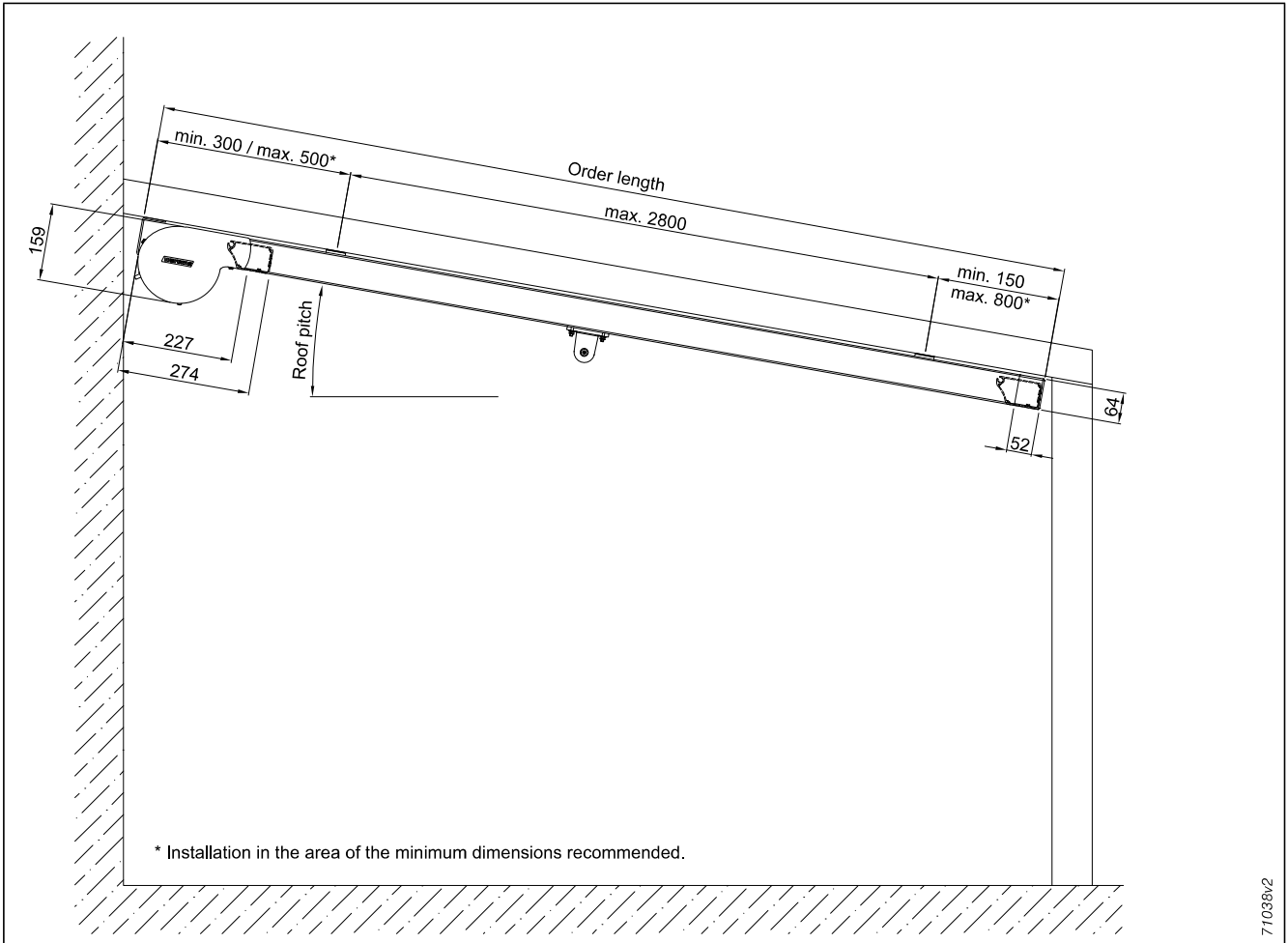
Guide rail brackets

Length (mm)	Guide rail brackets per rail
up to 3000	2
3001 to 6000	3

Ceiling brackets

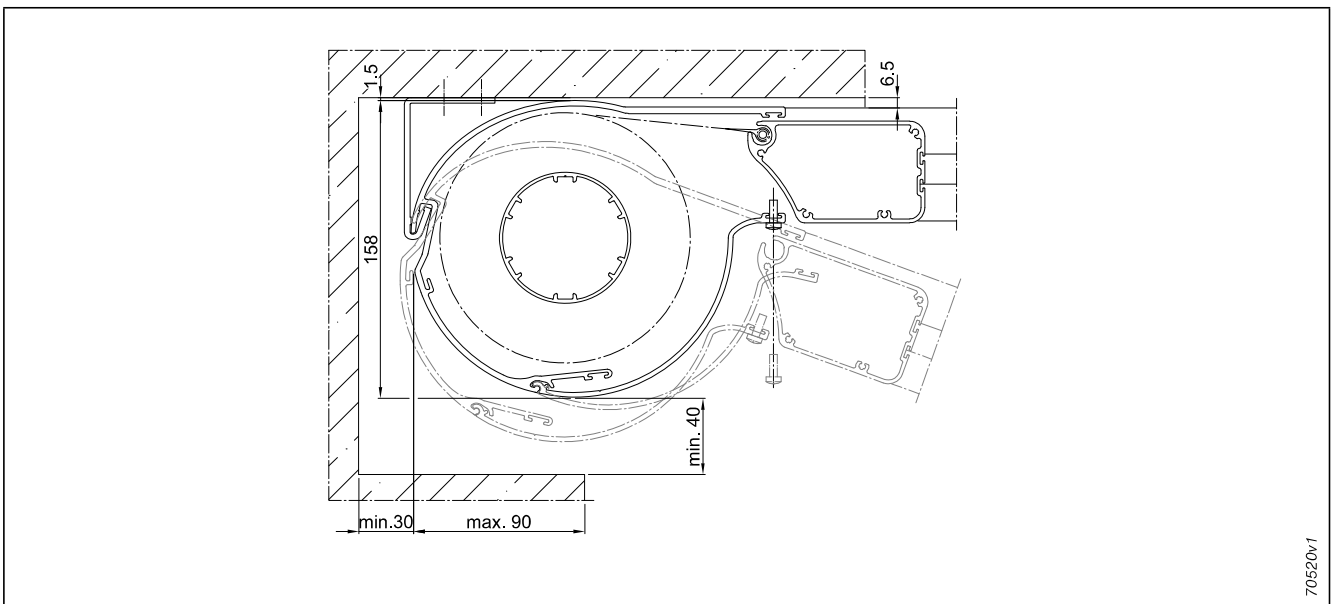
Width (mm)	Ceiling bracket
up to 4000	2
4001 to 6000	3

Measuring instructions
Conservatory awning Climara W9



71038v2

fig. 239: Conservatory awning W9



70520v1

fig. 240: Installation space cover panel

Measuring instructions

Conservatory awning Climara W9

Attention: Order width = middle of guide rail - middle of guide rail. The complete awning (incl. side covers) is 53 mm wider. Please note when ordering!

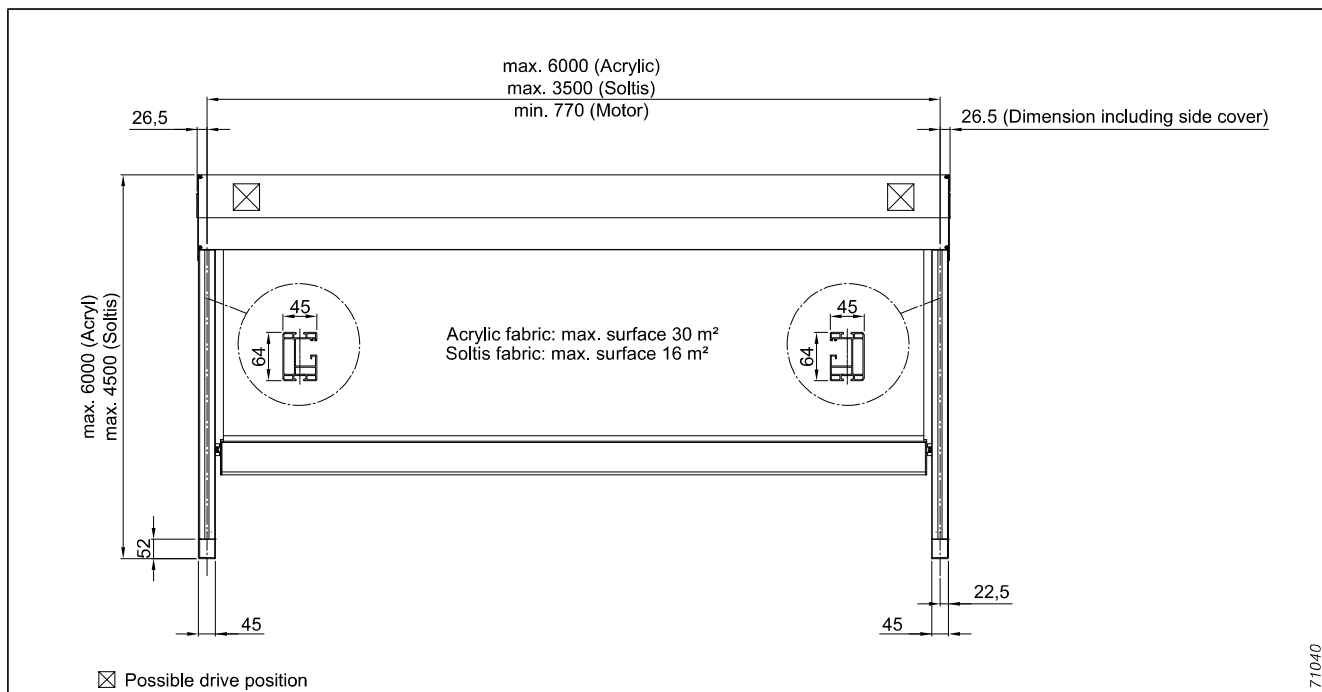


fig. 241: Measuring instructions for individual unit

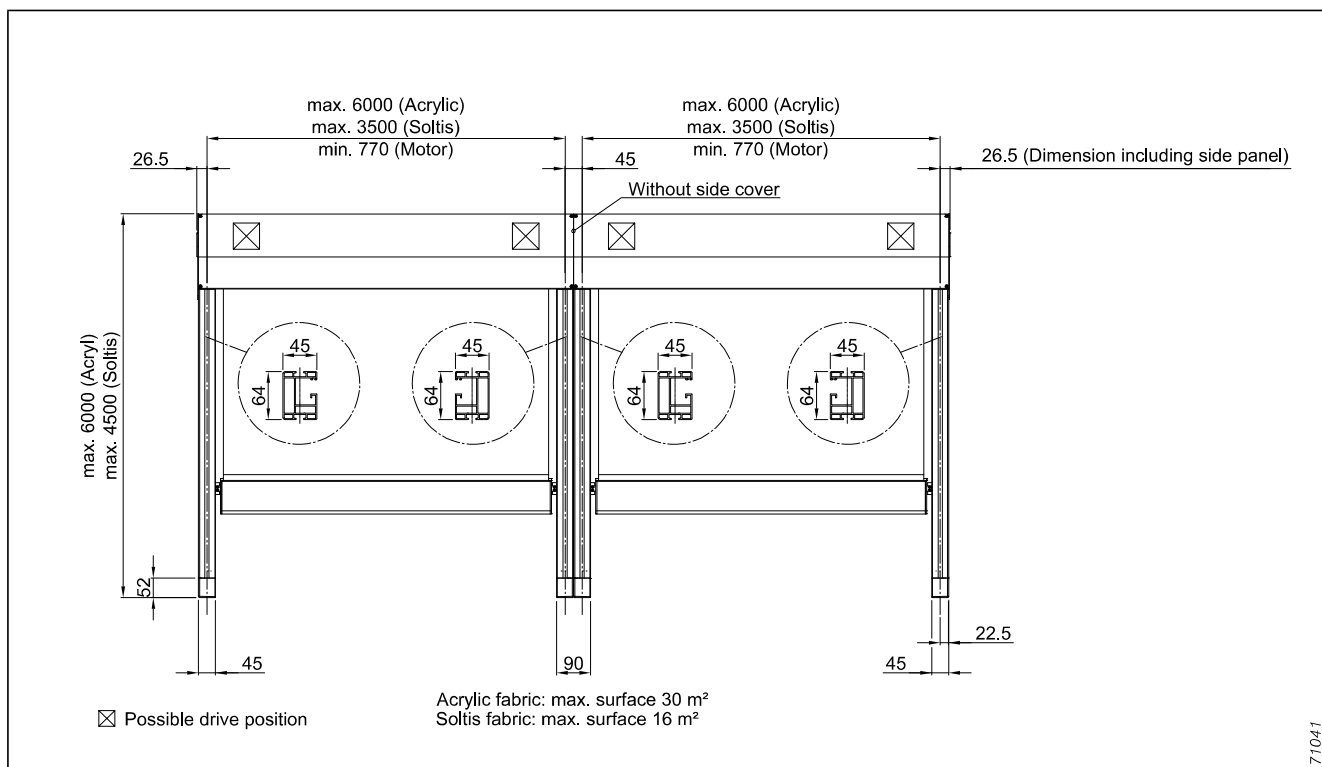


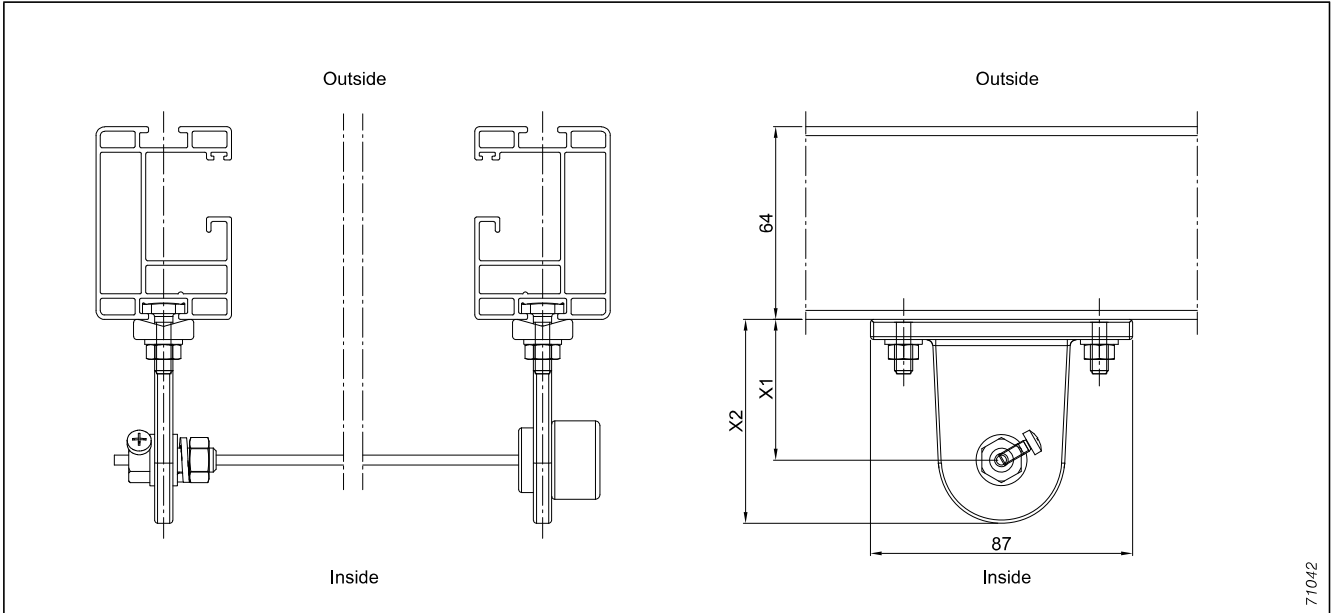
fig. 242: Measuring instructions for series-mounted unit

For series-mounted units it is possible to attach 2 guide rails with one bracket; after 12000 m an expansion joint of 20 mm is necessary!

Guy rope, cable exit

Conservatory awning Climara W9

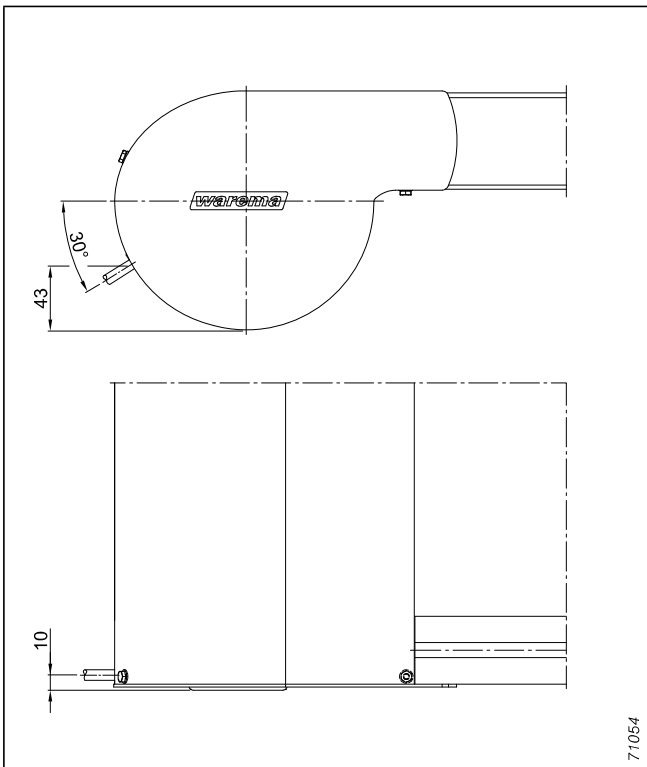
From an order length of 3001 mm with guy rope crosswise



71042

fig. 243: Guy rope crosswise

	without valance roller blind	with valance roller blind
X1	47	66
X2	68	87



71054

fig. 244: Cable exit

Mounting examples

Conservatory awning Climara W9

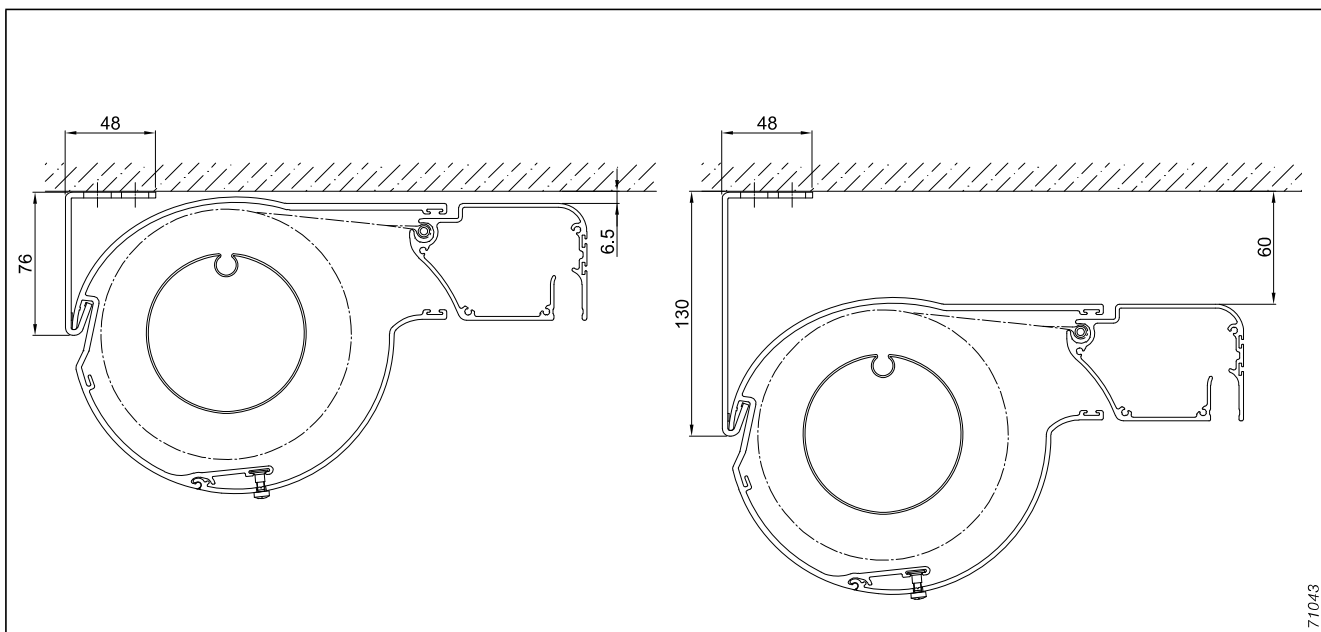


fig. 245: Overview of cover panel fixing

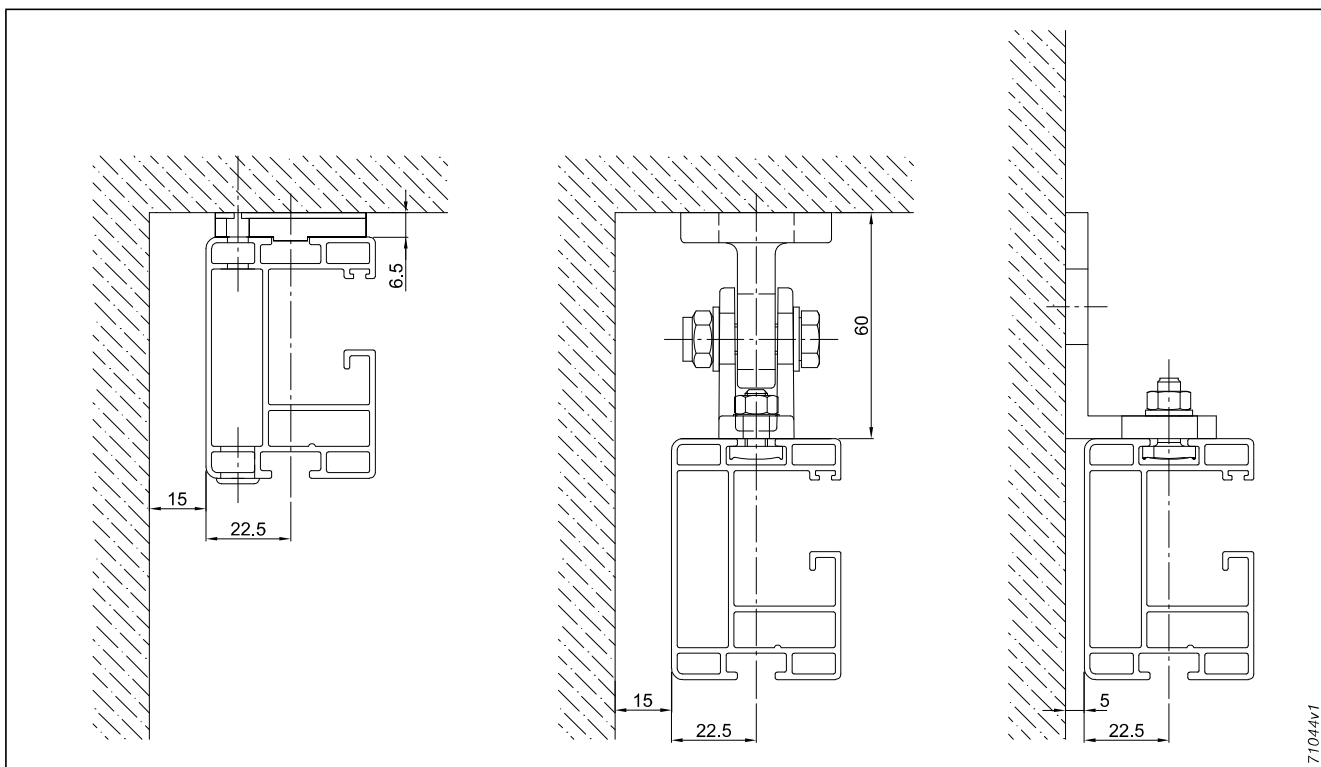


fig. 246: Overview of guide rail fixation

Description/Measuring instructions

Conservatory awning Climara W9

Direction of movement "from bottom to top"

Field of application

Internal conservatory awnings W9 are fitted under glazing and can be used with direction of movement "from bottom to top".

Notes:

- Conservatory awnings W9 are only available as individual units, i.e. no coupled curtains and no motor/end

bearing situations are possible! Each awning section requires 2 guide rails of its own!

- Valance roller blind not possible!
- Due to the cover panel opening in extension direction there is an increased risk of the fabric becoming soiled.

Order data

Please specify clearly on the order form:

- W9 - direction of movement "from bottom to top"
- State roof pitch

Construction limit values in mm W9 "from bottom to top"

	Type of fabric	Individual units	
		Roof pitch	
		1–40°	41–90°
Max. width	Acrylic – all qualities –	6000	5000
	Soltis 92 fabric	3500	3500
	Twilight Pearl/Metal	6000	5000
Min. width	Acrylic – all qualities –	770	770
	Soltis 92 fabric	770	770
	Twilight Pearl/Metal	770	770
Max. length	Acrylic – all qualities –	6000	6000
	Soltis 92 fabric	4500	4500
	Twilight Pearl/Metal	6000	6000
Min. length	Acrylic – all qualities –	750	750
	Soltis 92 fabric	750	750
	Twilight Pearl/Metal	750	750
Max. surface (m ²)	Acrylic – all qualities –	30	30
	Soltis 92 fabric	16	16
	Twilight Pearl/Metal	30	30

Measuring instructions

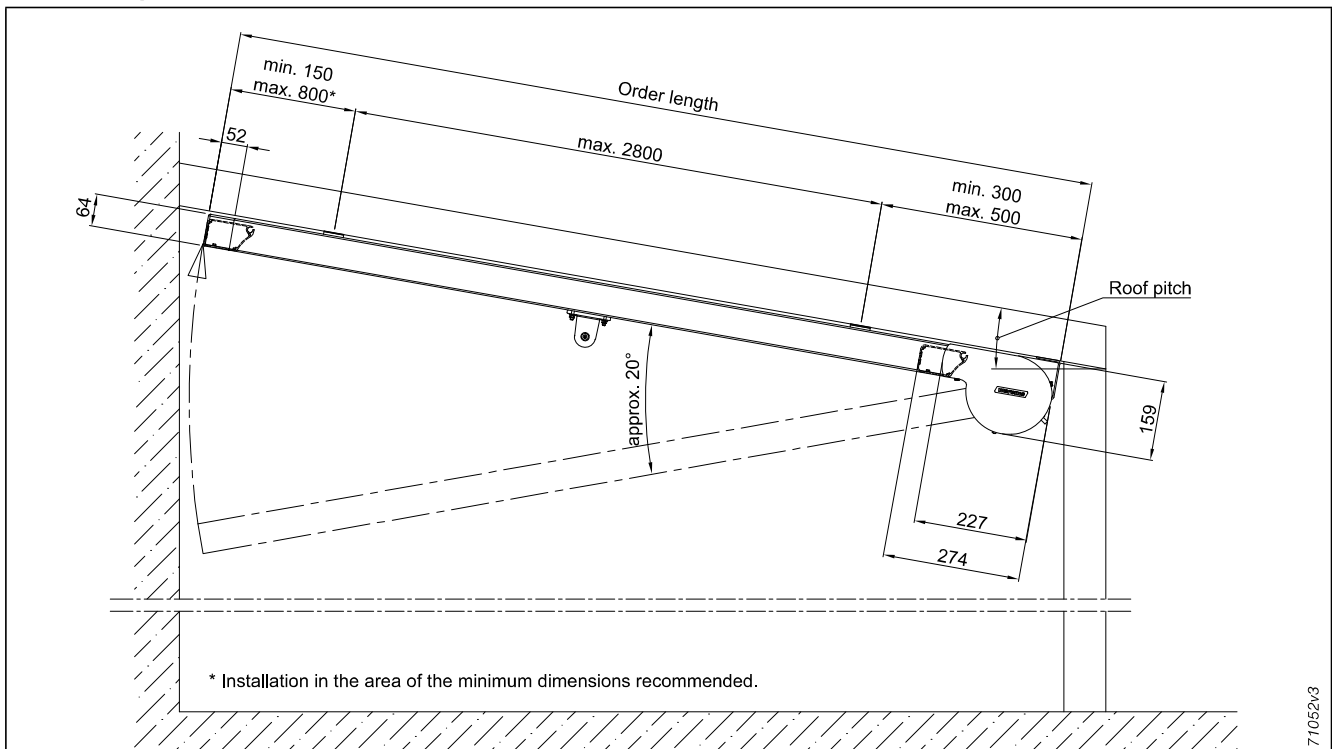


fig. 247: Measuring instructions for conservatory awning type W9 – direction of movement "from bottom to top". Installation on patio roof