

Description

Conservatory awning Climara W19

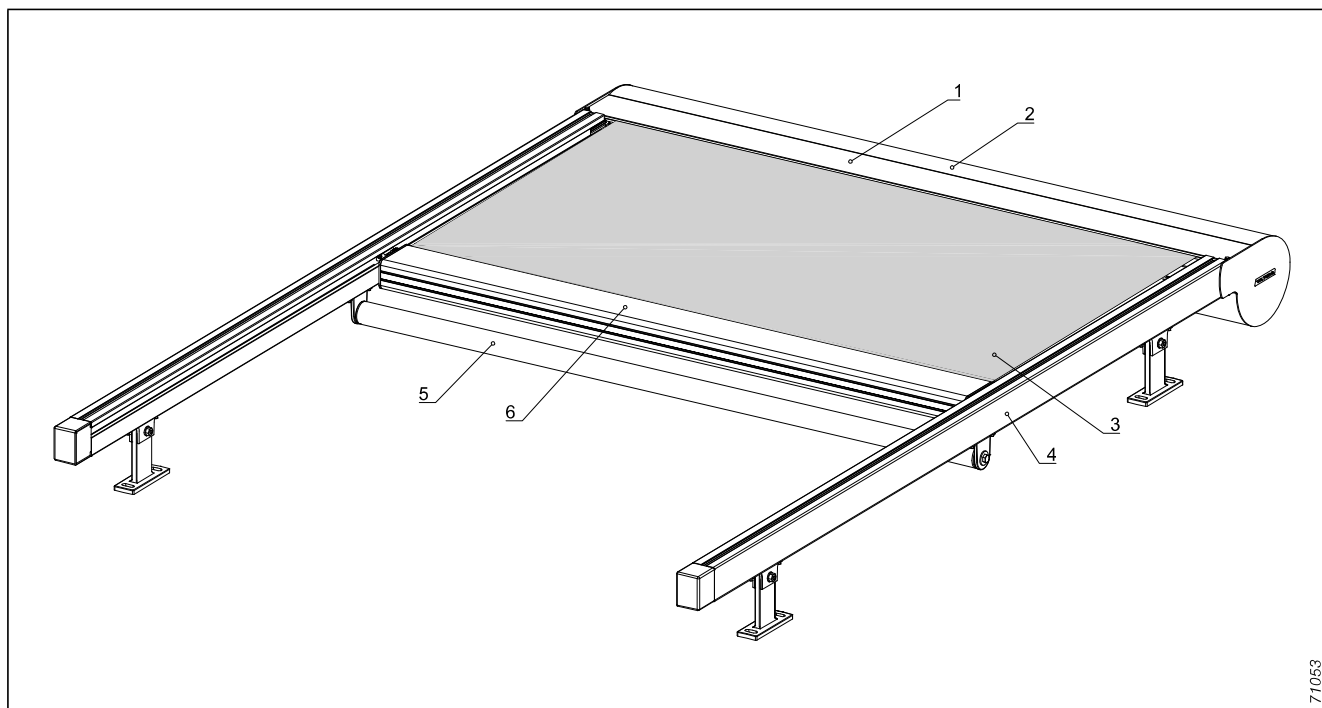


fig. 325: Conservatory awning W19

- 1 Cover panel
- 2 Shaft
- 3 Fabric
- 4 Lateral guidance
- 5 Reinforcement profile
- 6 Front rail

Application

External sun shading systems for shading glazed conservatories, patio roofs and pergolas.

Function principle: back-pull system via toothed belt with steel reinforcement. Additional brush seal in order to minimise soiling of the toothed belt due to environmental influences.

Optimal fabric tension through pre-tensioning of the spring mechanism

Operation

Motor

Basic motor, 230 V, 50 Hz

WM REA with electronic limit switch-off (optionally with EWFS/WMS Plug receiver)

EWFS radio motor, 230 V, 50 Hz (optional)

W-WM with electronic limit switch-off

WMS radio motor, 230 V, 50 Hz (optional)

WMS-WM with electronic limit switch-off

More information about drives from page 275.

Cover panel (1)

two-piece, closed at the side, incl. brush seal

Material: aluminium, extruded

Dimensions (WxH): 199x159 mm

Surface: powder-coated

Shaft (2)

Fabric shaft

Material: steel, galvanised

Material thickness: 1 mm

Dimensions (Ø): 85 mm

Profile: groove tube

Surface: plain

Motor shaft

Material: aluminium

Material thickness: 1.25 mm

Dimensions (Ø): 56 mm

Profile: round profile

Surface: plain

Fabric (3)

Fabric qualities: Standard/Lumera acrylic fabric

Perfora acrylic fabric

Soltis 92 fabric

Twilight Pearl/Metal

More information about the fabrics on page 266

Designs: according to current WAREMA awning collection

Special fabrics not included in our current awning collection are only available upon request and at a surcharge.

Lateral guidance (4)

with back-pull system via toothed belt

with mounting groove incl. brush seal

Material: aluminium, extruded

Dimensions (WxH): 45x64 mm

Surface: powder-coated

Fixing: brackets, from page 197

Pulling element: Toothed belt with steel inserts

Description

Conservatory awning Climara W19

End cap: powder-coated with deflection bearing

Reinforcement profile (5)

for ordering lengths from 3001 mm

Material: aluminium, extruded

Dimensions (Ø): 40 mm or 60 mm

Profile: round profile

Surface: powder-coated

For order widths from 3501 mm or order lengths from 3001 mm, the Ø 40 mm profile is either equipped with a support or a Ø 60 mm profile is used.

Front rail (6)

Material: aluminium, extruded

Dimensions (WxH): 94 x 54 mm

Surface: powder-coated

Fixing and connecting parts

within the awnings:

Material: A2 steel or aluminium

Colours

Powder coating of aluminium parts with chrome-free pre-treatment according to valid RAL CLASSIC colour chart (except camouflage and luminous colours) or in six DB colours as well as eight textured colours, four anodised-look colours (WC31 – WC34) and further colours according to WAREMA Colour World (in WAREMA colour specification). Other colour specifications and special colours are available on request and are subject to surcharge.

Checklist

- Provide drawings of the conservatory, or draft a sketch and, in addition, send a photo (if possible)
- Fabric colour and quality
- Frame colour
- Type of guide rail brackets
- Specify the drive position. (operation side of cover panel in direction of movement)
- Arrange for supply line on-site
- Arrange for housing of plug-in connector
- Lock ventilation flaps and awning against each other or elevate the awning

Information on operation and electrical connection:

The following connection conditions must be taken into consideration when operating electronic motors:

1. It must be ensured that the drives are to be operated via locked switching elements. However, the drives switch to programming mode, if synchronous voltage is applied to the up and down running direction. In this case, the integrated electronics lose their stored limit positions and await new programming.
2. Switching devices with the so-called 3-wire conductor technology (e.g. Rademacher timer clip) cannot be used because these devices draw their operating voltage from the drive and the electronics in the motors do not build up enough voltage.

If both conditions have been met, the electronic motors can be operated with any roller shutter controller or bus system (via actuators).

Weights/run times/guide rail

Conservatory awning Climara W19

Diagram for determining run time of a conservatory awning W19

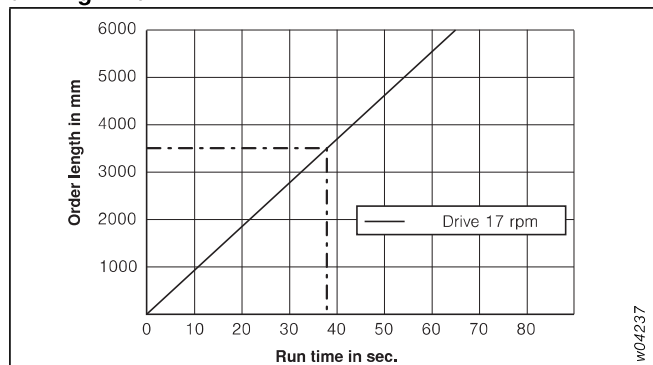


fig. 326: Diagram for determining run time

How to read the diagram:

Awning with order length of 3500 mm and drive speed of 17 rpm has a run time of approx. 38 sec.

Guide rails

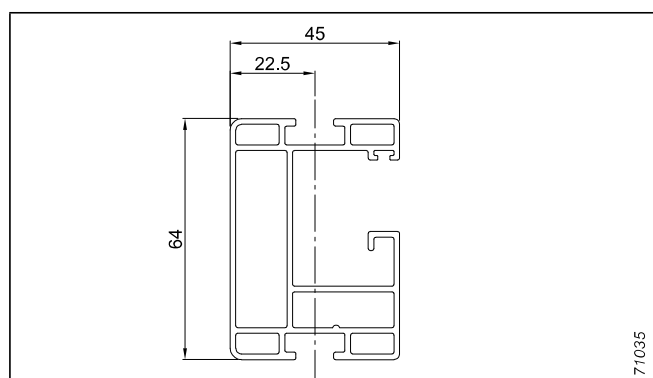


fig. 327: Guide rail

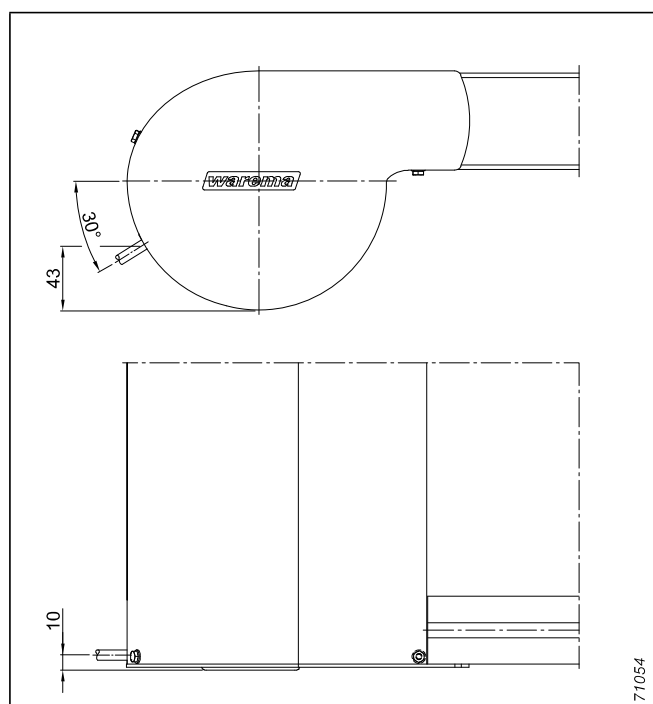


fig. 328: Cable exit

Diagram for determining the weight of a conservatory awning W19 (motorised unit)

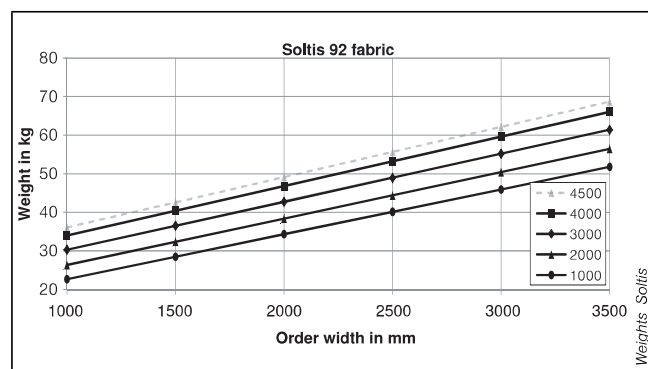
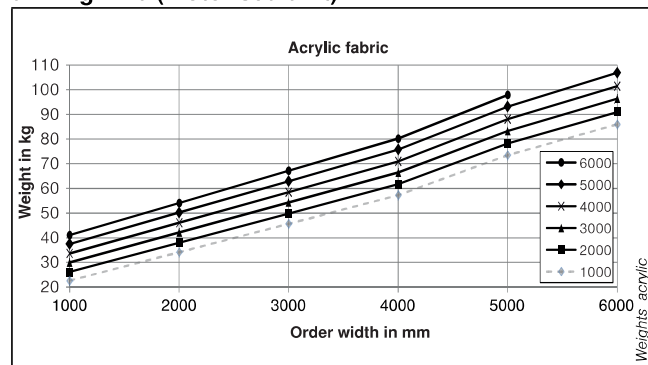


fig. 329: Diagrams for determining weights for W19

How to read the diagram:

Awning with order length of 3000 mm, order width of 2000 mm and Soltis 92 fabric has a weight of approx. 43 kg.

Construction limit values/definitions

Conservatory awning Climara W19

Construction limit values in mm W19

External sun shading systems	Type of fabric	Individual units	Coupled curtains (max. 2)	
Max. width	Acrylic – all qualities –	6000	12000	
	Soltis 92 fabric	3500	7000	
	Twilight Pearl/Metal	6000	12000	
Min. width			Motor unit	Travelling unit
	Acrylic – all qualities –	770	770	290
	Soltis 92 fabric	770	770	290
	Twilight Pearl/Metal	770	770	290
Max. length	Acrylic – all qualities –	6000	6000	
	Soltis 92 fabric	4500	4500	
	Twilight Pearl/Metal	6000	6000	
Min. length	Acrylic – all qualities –	750	750	
	Soltis 92 fabric	750	750	
	Twilight Pearl/Metal	750	750	
Max. area (m ²)	Acrylic – all qualities –	30	60	
	Soltis 92 fabric	16	32	
	Twilight Pearl/Metal	30	60	

Note:

Each awning requires 2 single guide rails.

Definitions

The drive end or operation side is always seen from the cover panel in extension direction.

Order width = from one guide rail fixing axis to the next fixing axis = axial dimension

Guide rail brackets

Order length (mm)	Guide rail brackets per rail
up to 3000	2
3001 to 6000	3

Measuring instructions

Conservatory awning Climara W19

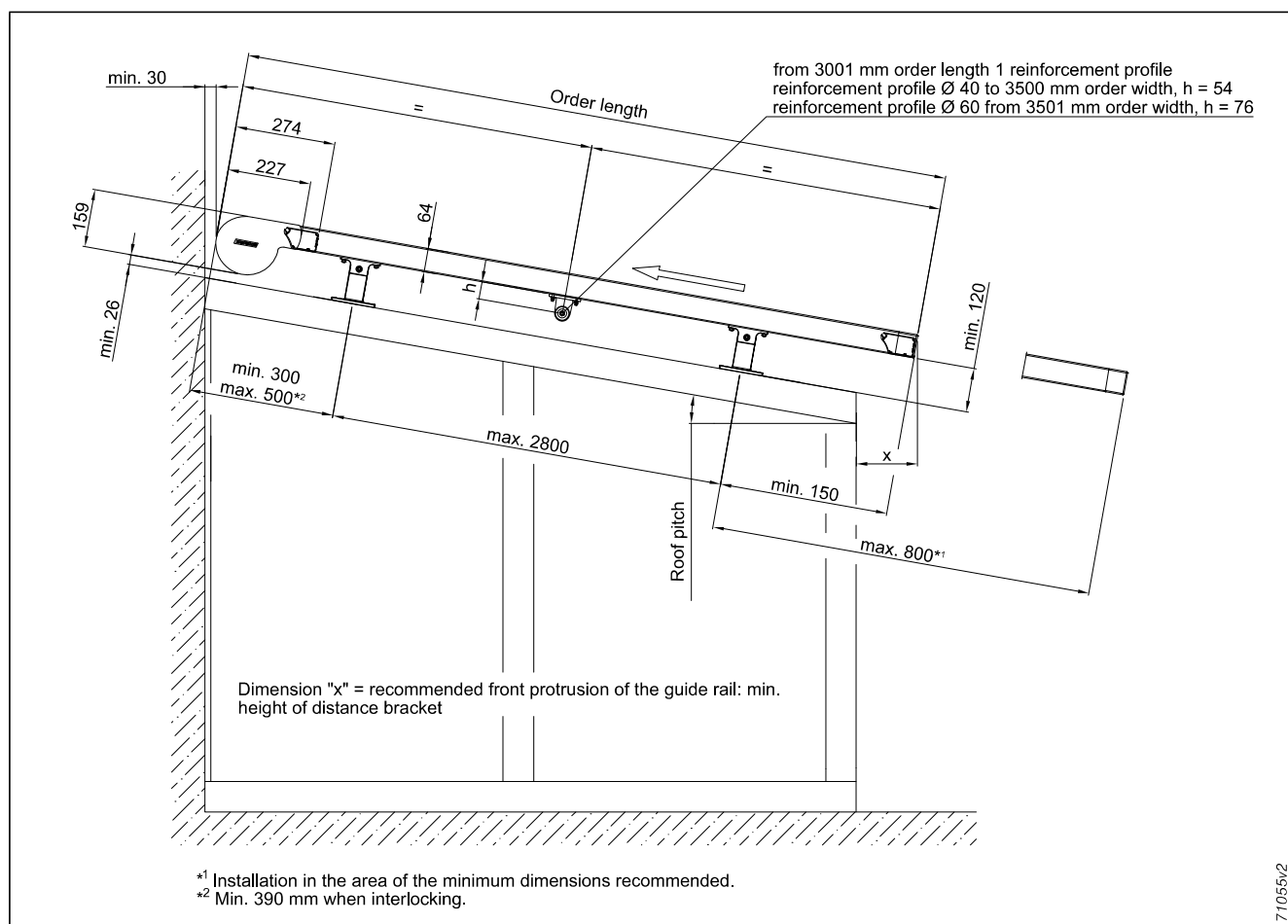


fig. 330: Conservatory awning W19

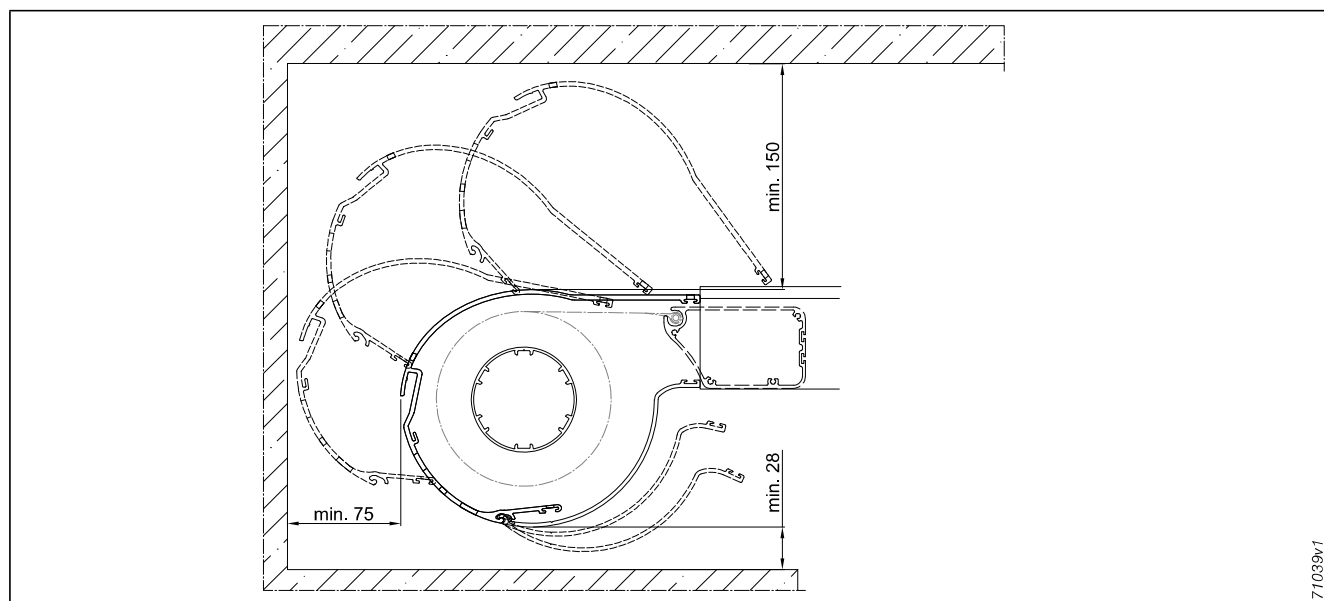


fig. 331: Installation space cover panel

Measuring instructions

Conservatory awning Climara W19



Attention!

Order width = centre of guide rail – centre of guide rail. The complete awning (incl. side covers) is 53 mm wider. Please note when ordering!

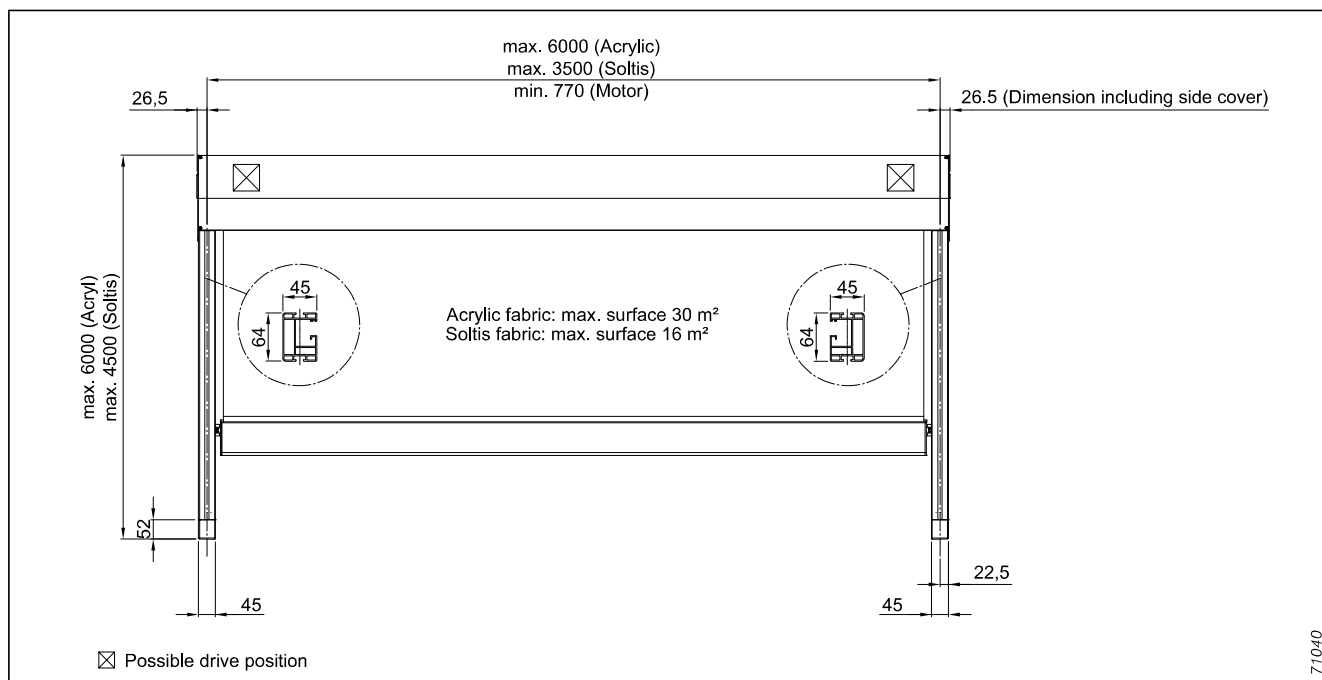


fig. 332: Measuring instructions for individual unit

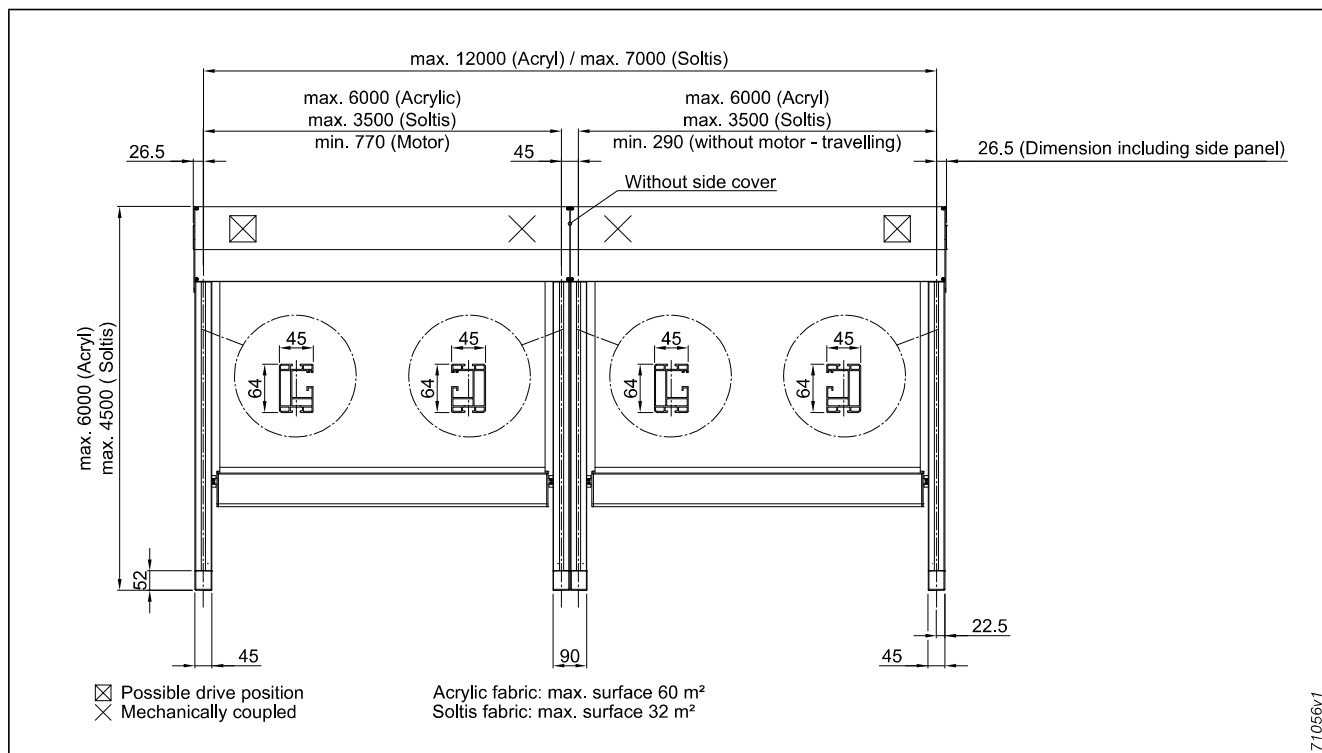


fig. 333: Measuring instructions for mechanically coupled curtains

With series-mounted units it is possible to attach 2 guide rails with one bracket; after 12000 m an expansion joint of 20 mm is necessary!