



Pergola awnings Perea

Pergola awnings Perea P40 WeatherEdition

Stable

Functional and elegant: With secudrive® technology, the fabric runs tightly and securely on the rail - a fixed reinforcement profile additionally tensions the fabric.

Doubly practical

Rain-proof (rain class 2) and translucent: With the Sunworker Top fabric quality, the area underneath the awning remains dry even when the weather is bad, without being completely darkened. Rainwater is reliably diverted by the drainage grid integrated into the fabric.

Customisable

The right accessories for every wish: For example, the optional LED lighting creates a cosy atmosphere in the evening.

Construction limit values

Maximum order width	6000 mm
Maximum order depth	5000 mm

Order here

myWAREMA

🔗 Art.-Nr. 2053877

Order form

🔗 <https://docs.warema.com/fi/2053103.pdf>

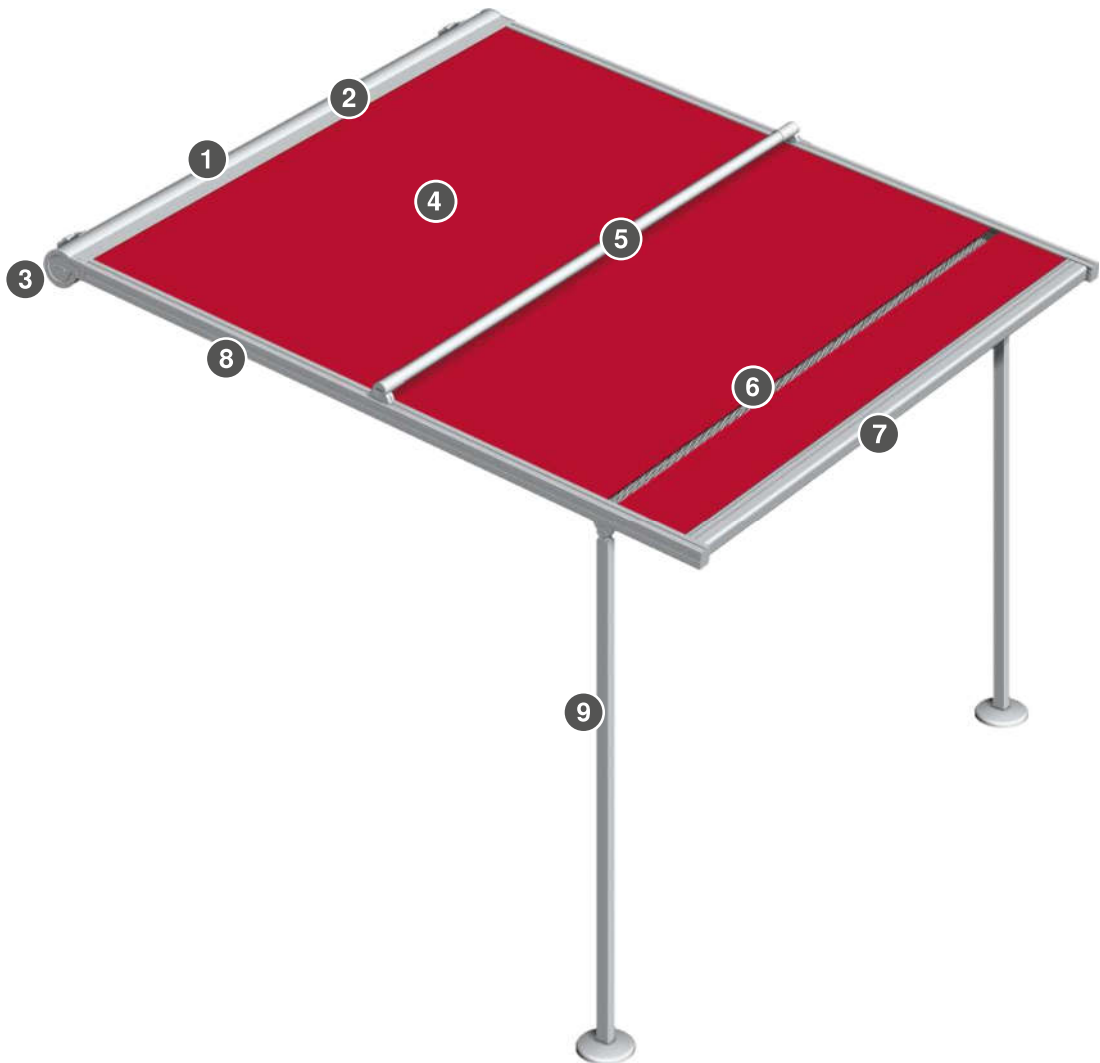
WAREMA tools

🔗 *Collection Assistant*

➕ see "Navigating the document", Page 5

Components

Perea P40 pergola awning WeatherEdition



- 1 Cover panel
- 2 Shaft
- 3 Console
- 4 Awning fabric
- 5 Reinforcement profile

- 6 Drainage grid
- 7 Front rail
- 8 Guide rail
- 9 Pole

Cover panel

Cover panel - P40/P40 WE/P60

Material	Aluminium, extruded
Surface	Powder-coated
Width	210 mm
Height	180 mm

Shaft

Motor shaft Ø 70 mm

Material	Aluminium
Surface	Plain
Profile	Round profile
Diameter	70 mm

Fabric shaft Ø 86.2 mm

Material	Aluminium
Surface	Plain
Profile	Round profile
Diameter	86.2 mm

Front rail

Front rail - P40/P40 WE/P60

Material	Aluminium, extruded
Surface	Powder-coated
Width	113 mm
Height	74 mm

Planning

Terrea

Perea

Patio
side screens

Climara

Supplementary
accessories

Components

Drive
variants

Standards

Reinforcement profile

Reinforcement profile Ø 60 mm

Material	Aluminium, extruded
Surface	Powder-coated
Diameter	60 mm

Pole

Pole - Perea

Maximum order height	2500 mm
Material	Aluminium, extruded
Surface	Powder-coated
Width	45 mm
Depth	60 mm

Notes on construction limit values:

Offset:

Max. 1/3 of order depth;

Max. 1200 mm; min. 105 mm

Base plate

Base plate - Ø 200 mm Perea

Material	Galvanised steel
Surface	Powder-coated
Diameter	200 mm

Base cover, optional

Base cover - P40/P40 WE

Material	Aluminium, permanent mould cast
Surface	Powder-coated
Height	35 mm
Diameter	240 mm

Drainage

Drainage grid

Material	PVC
Material colour	Black
Depth	30 mm

The drainage grid runs across the entire order width.

Wall connection profile, optional

- Wall connection profile with large rain hood

⊕ see "Wall connection profiles", Page 459

Console

Wall console type A - 550/P40/P40 WE/P60

Material	Aluminium, extruded
Width	140 mm
Height	140 mm
Depth	29 mm

Wall console type B - 550/P40/P40 WE/P60

Material	Aluminium, extruded
Width	185 mm
Height	140 mm
Depth	29 mm

Wall installation with 3 drilled holes

Ceiling console type E - 550/P40/P40 WE/P60

Material	Aluminium, extruded
Surface	Powder-coated
Width	100 mm
Height	183 mm
Depth	182 mm

Console for rafters type F - 550/P40/P40 WE/P60

Material	Aluminium
Surface	Powder-coated
Width	100 mm
Height	413 mm
Depth	182 mm

Guide variants

- secudrive®

Guide rail

Guide rail - Perea straight

Material	Aluminium, extruded
Surface	Powder-coated
Width	65 mm
Height	80 mm

Drive variants

- Motor

Motor

- WM REA

Radio motor, optional

- WMS-PM (WMS)

+ see "Drive variants", Page 471

Colours

- WAREMA Colour World

+ see "Colours and finishes", Page 10

Fabric qualities

- Sunworker Top
- Sunvas Perla FR

+ see "Awning collection", Page 460

Construction limit values

Configuration variants	Minimum order width	Maximum order width	Minimum order depth	Maximum order depth	Maximum order area	Minimum inclination angle	Maximum inclination angle
Fabric qualities							
Sunworker Top / Sunvas Perla FR	950 mm	6000 mm	800 mm	5000 mm	30 m ²	9 °	15 °

Inclination:

The inclination for the rainwater drain (= difference between installation height and headroom) is at least 9°.

Reinforcement profile:

A fixed reinforcement profile is generally used, regardless of the order depth.

Series-mounted units:

- Generally, only individual units are possible, i.e. no unit coupling!
- The lining up of several pergola awnings is possible with a flush closure.
- Each awning section requires two single guide rails.
- The installation of two guide rails on one pole is possible with an adapter plate.
- In the case of a series-mounted unit, an expansion joint of 20 mm is required after 13000 mm!

+ see "Dimension determination", Page 164

Dimensions

Weight per running metre: 20 - 24 kg/lfm

Weight per running metre, notes: Cover panel without consoles, without guide rails and poles.

Supplementary accessories

- Integrated lighting
- LED strip light rail
- Radiant heater
- Patio frame

+ see "Supplementary accessories", Page 325

Notes

Planning permission:

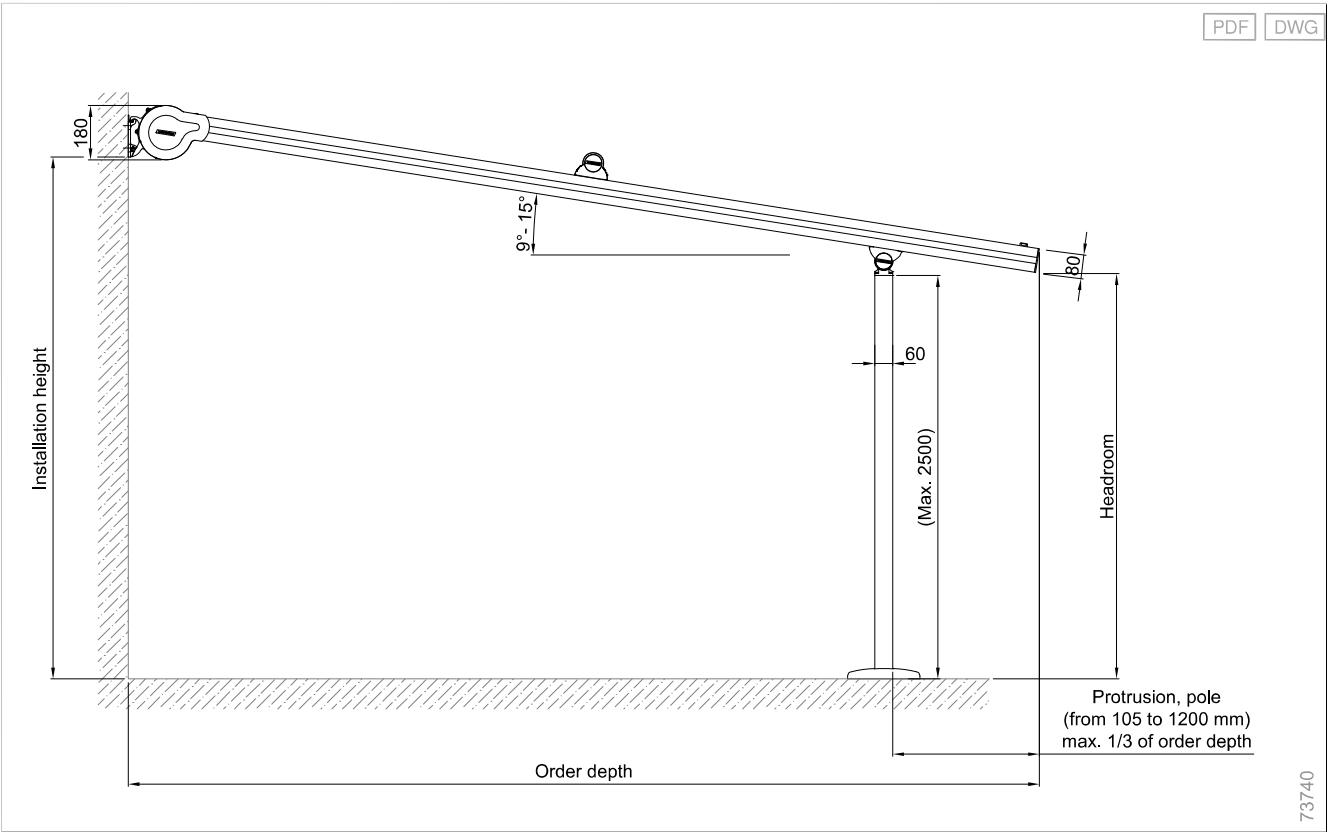
Pergola awnings require planning permission, depending on their overall size and the local regulations.

Fixing of the radiant heater:

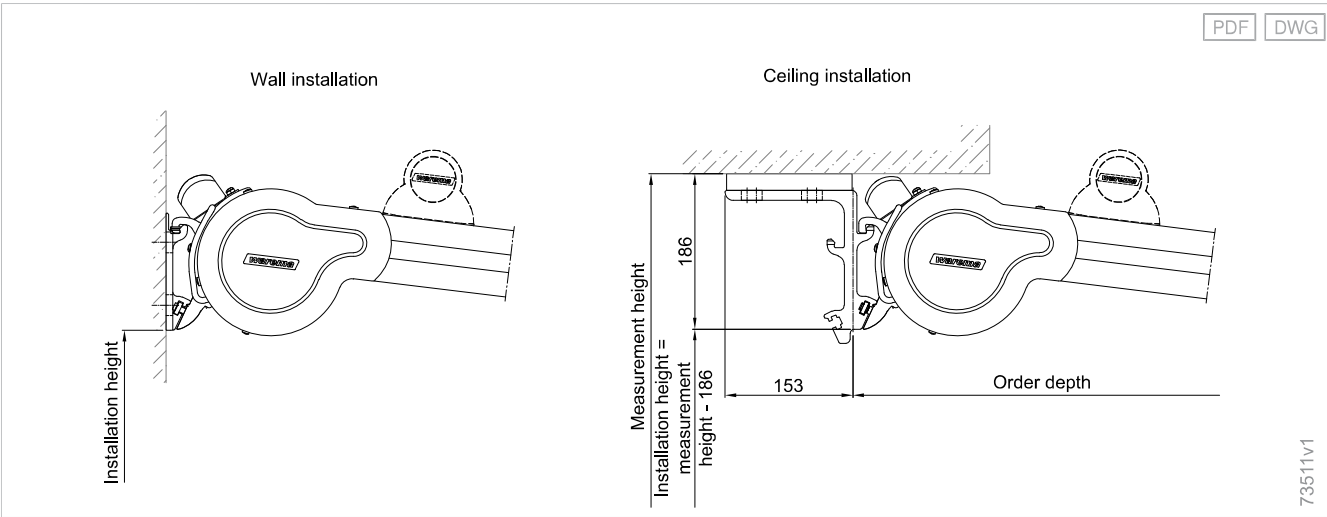
It is not possible to fix the radiant heaters directly to Perea pergola awnings.

Dimension determination

Guide rail - P40 WeatherEdition

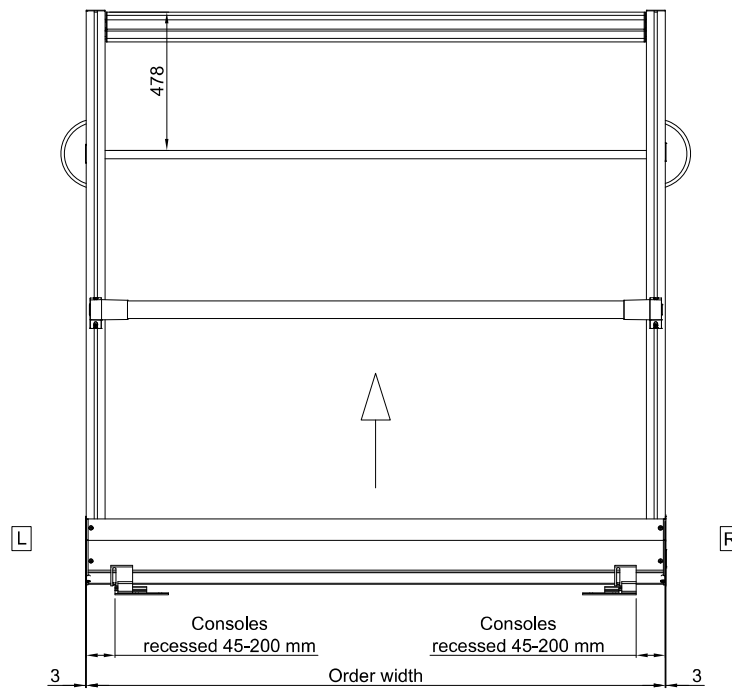


Determining the installation height for wall/ceiling console - P40



Top view for individual units

PDF DWG



The position of the drainage grid is measured from the leading edge of the front profile to the leading edge of the drainage grid and is generally defined to be 478 mm.

Planning

Terrea

Perea

Patio
side screens

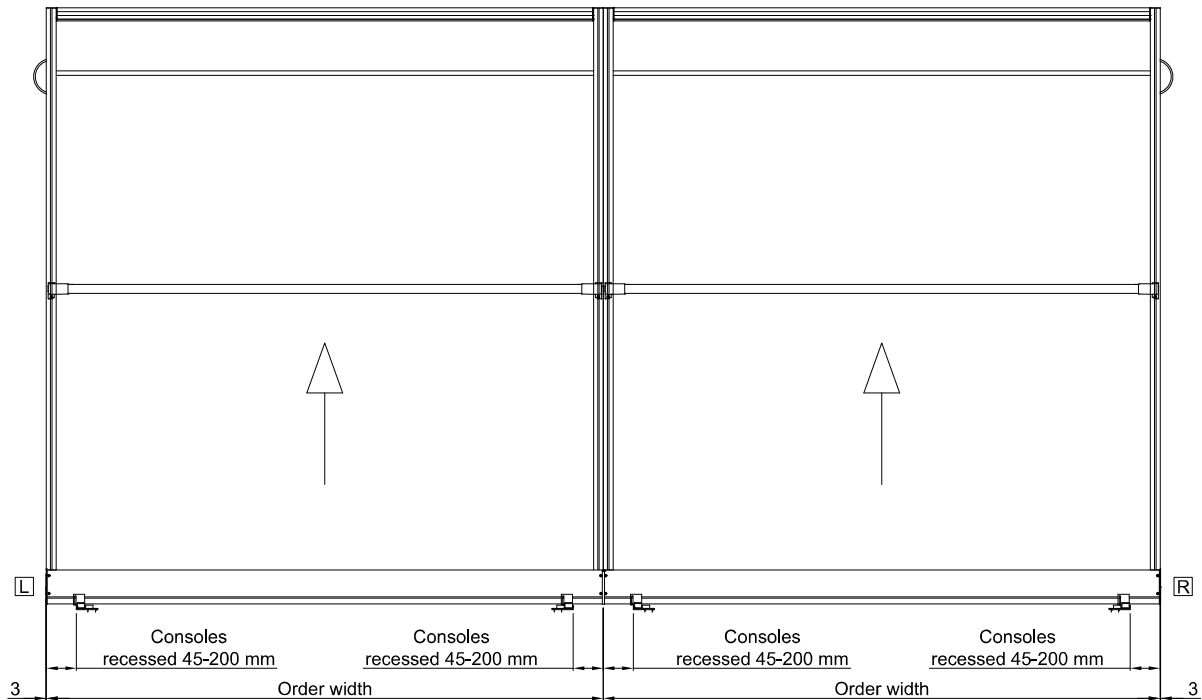
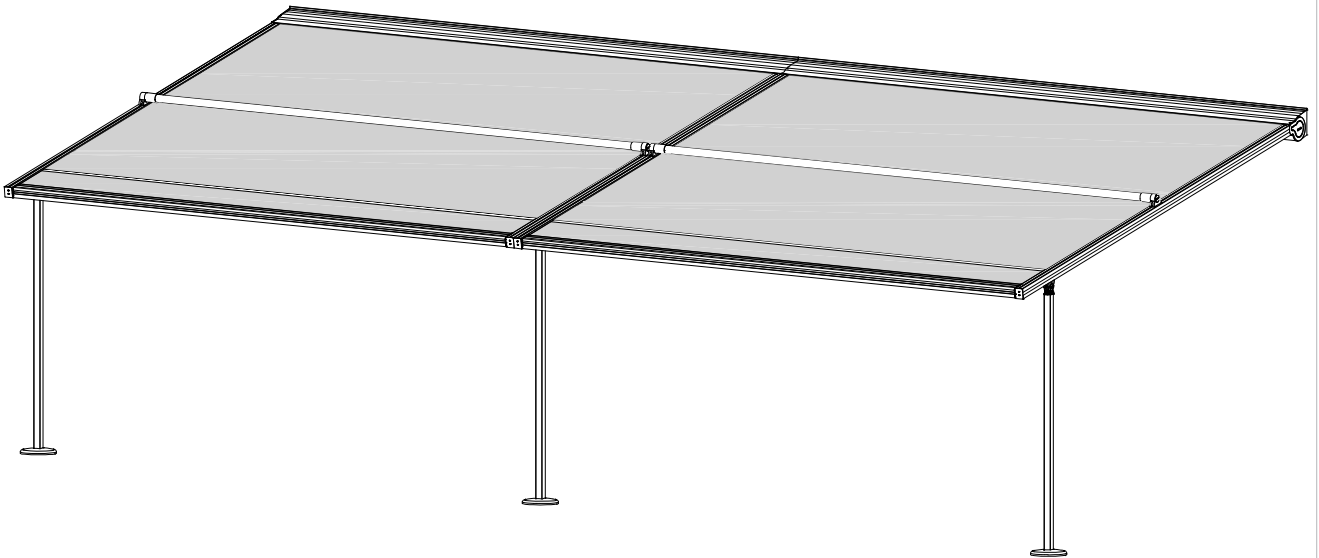
Climara

Supplementary
accessories

Components

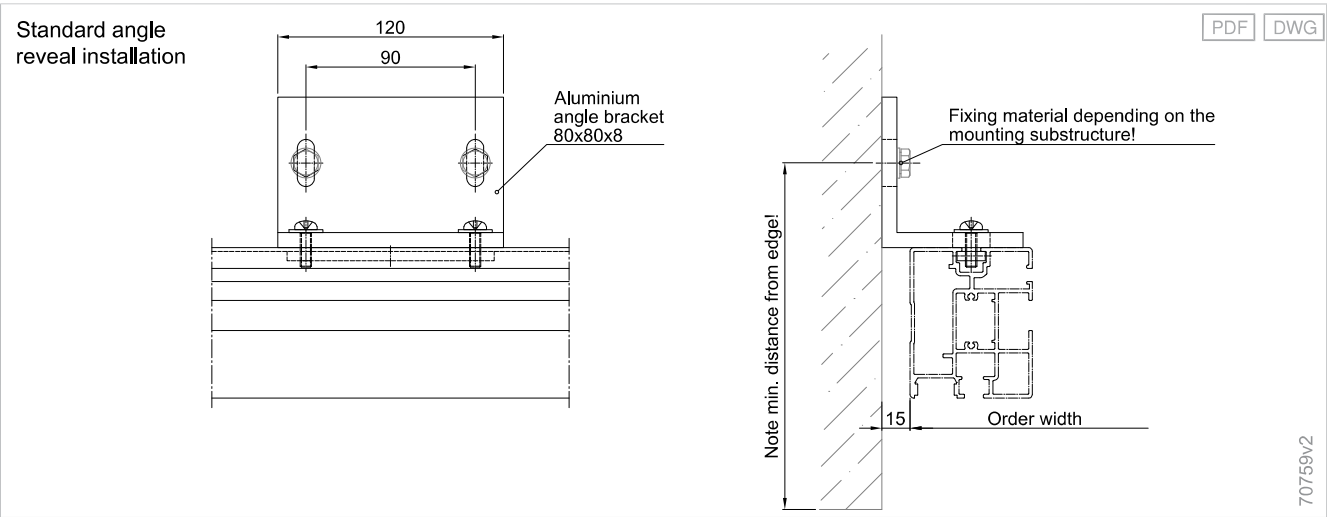
Drive
variants

Standards



72394v1

Reveal installation



Dimension determination

Configuration variants	Order depth	2000 mm	2500 mm	3000 mm	3500 mm	4000 mm	4500 mm	5000 mm
Fabric qualities								
Sunworker Top / Sunvas Perla FR	Minimum difference	220 mm	310 mm	390 mm	470 mm	540 mm	630 mm	710 mm

This is the minimum difference between the installation height and the headroom for the minimum inclination of 9° required for rainwater drainage.

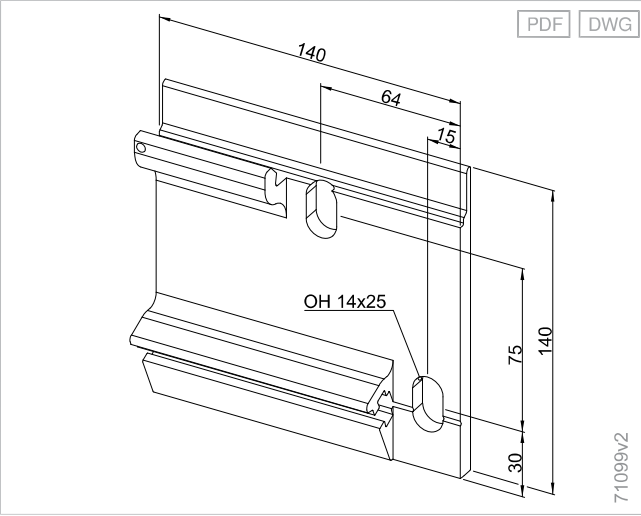
Quantity determination

Number of consoles, individual unit

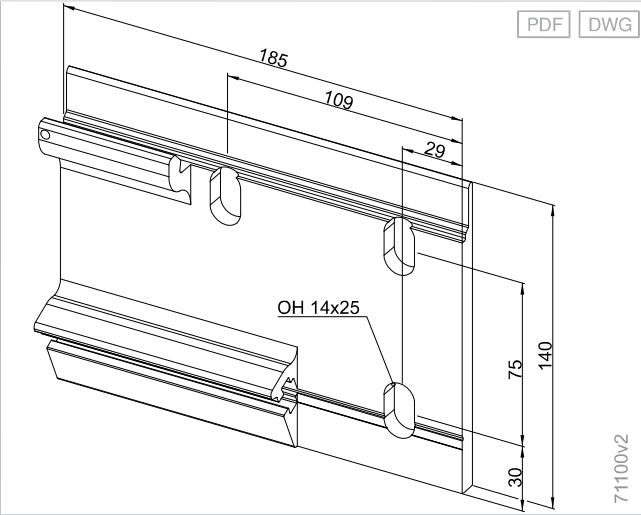
Configuration variants	Order width	Order depth
		800 - 5000 mm
Console/Bracket		
Wall console / Ceiling console / Console for rafters	950 - 6000 mm	2

Details

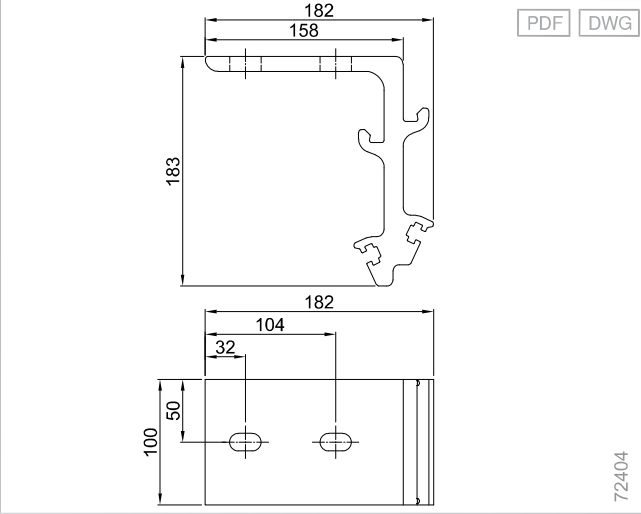
Wall console type A, right console; left console laterally reversed - 550/P40/P40 WE/P60



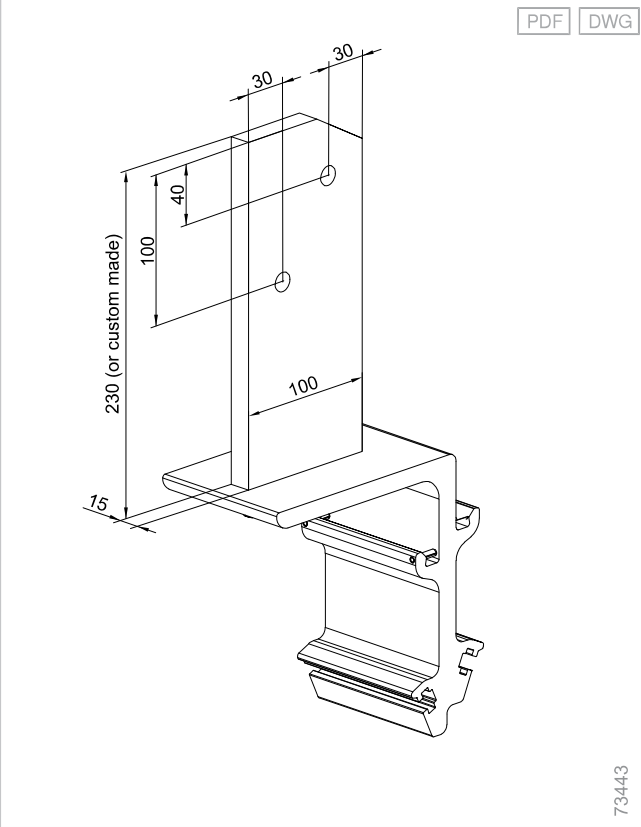
Wall console type B, right console; left console laterally reversed - 550/P40/P40 WE/P60



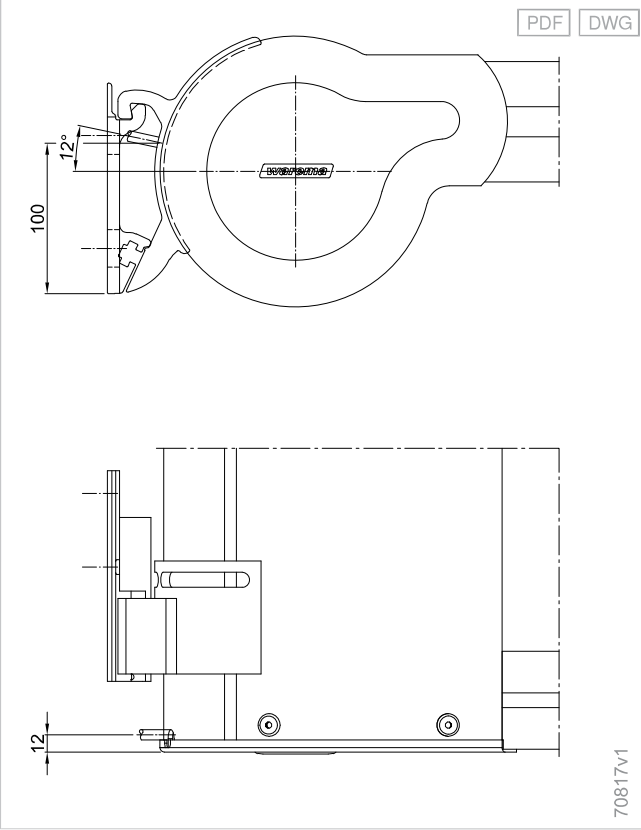
Ceiling console type E - 550/P40/P40 WE/P60



550/P40/P40 WE/P60, console for rafters type F



Cable exit - P40/P40 WE



Planning

Terrea

Perea

Patio
side screens

Climara

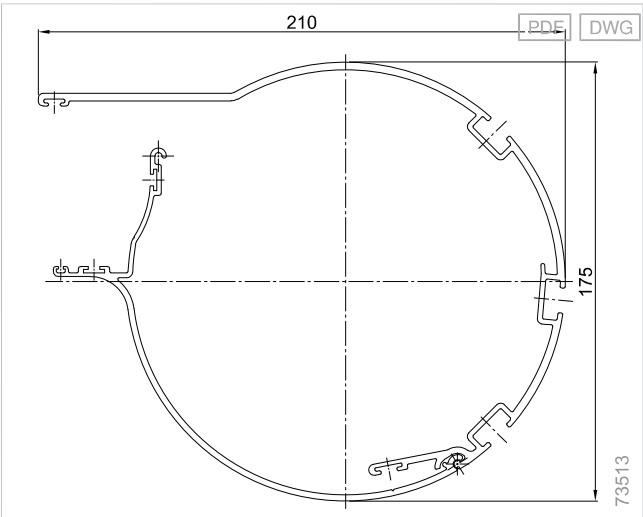
Supplementary
accessories

Components

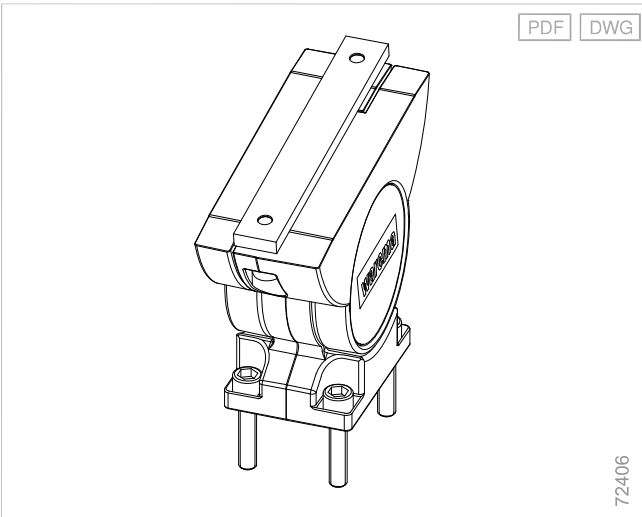
Drive
variants

Standards

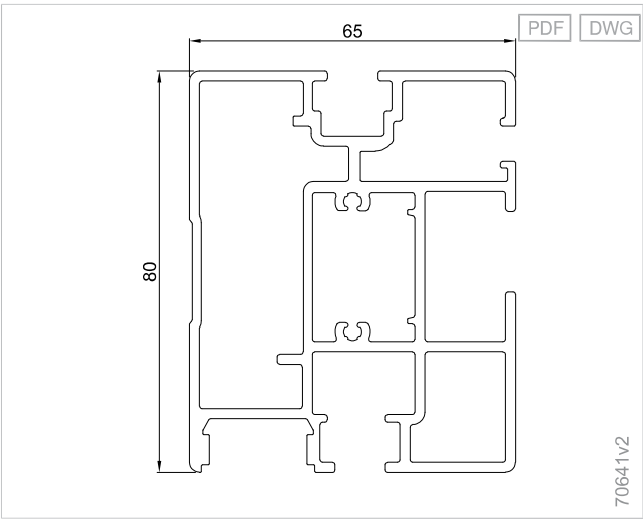
Cover panel - P40/P40 WE/P60



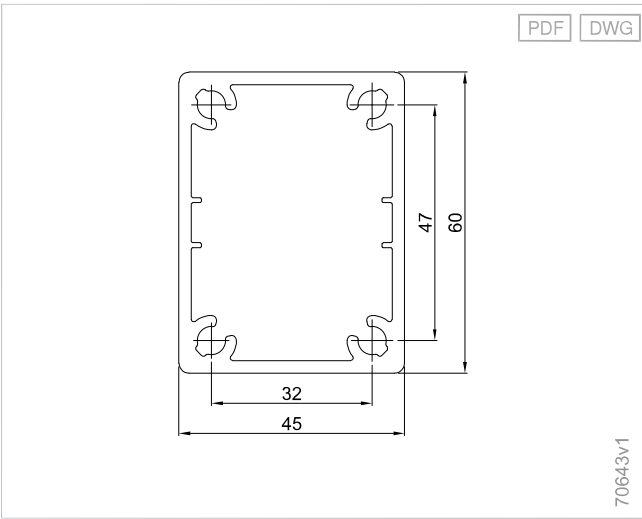
Pole attachment to guide rail - P40/P40 WE



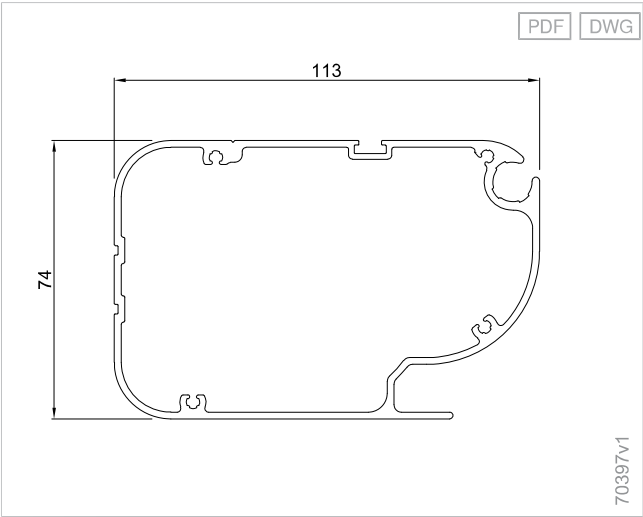
Guide rail - P40/P40 WE/P60



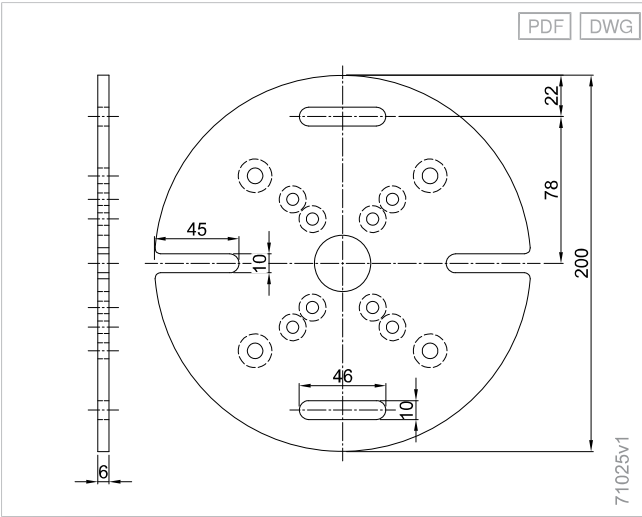
Pole - P20/P40/P40 WE



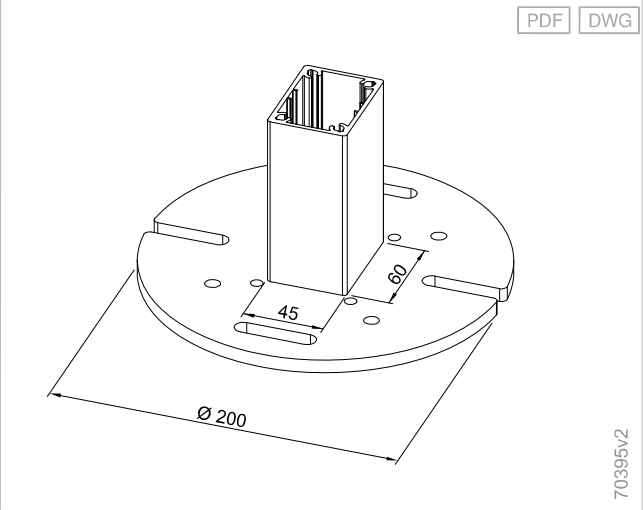
Front rail - P40/P40 WE/P60



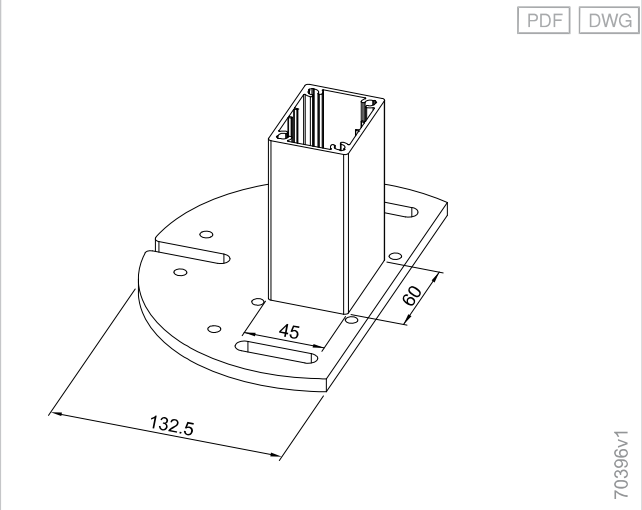
Pole fixing base plate - P20/P40/P40 WE/P60/P70



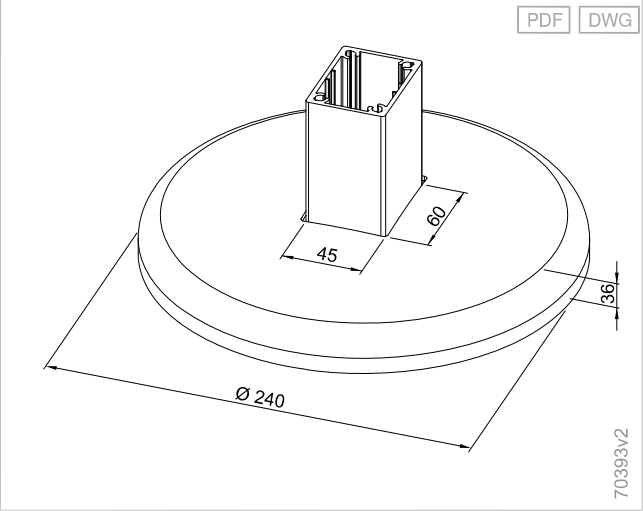
Pole fixing - P20/P40/P40 WE



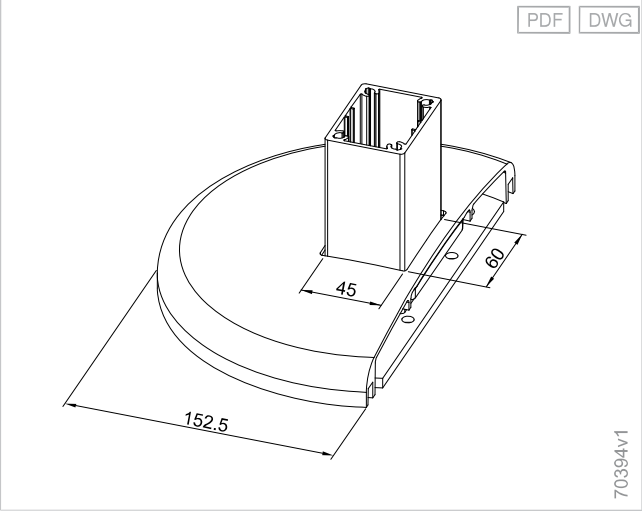
Pole fixing for lateral reveal installation - P20/P40/P40 WE



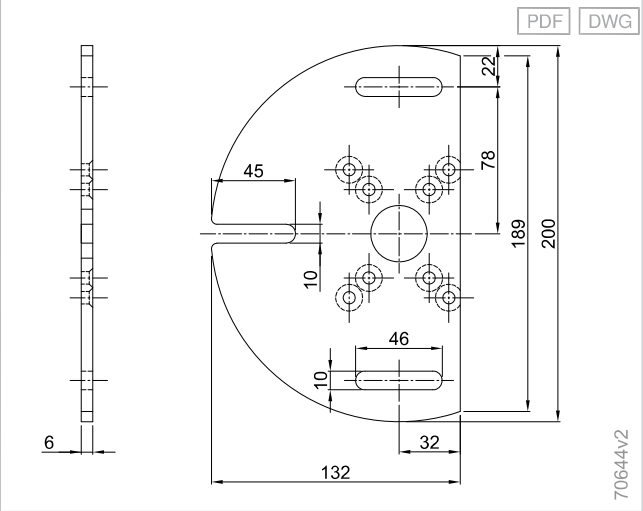
Base cover - P40/P40 WE



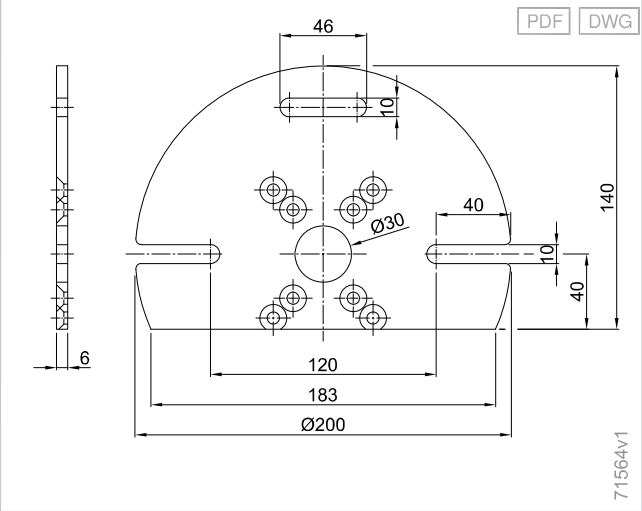
Base cover for lateral reveal installation - P40/P40 WE



Pole fixing base plate for reveal installation, lateral - P20/P40/P40 WE



Pole fixing base plate for reveal installation, front - P20/P40/P40 WE



Planning

Terrea

Perea

Patio
side screens

Climara

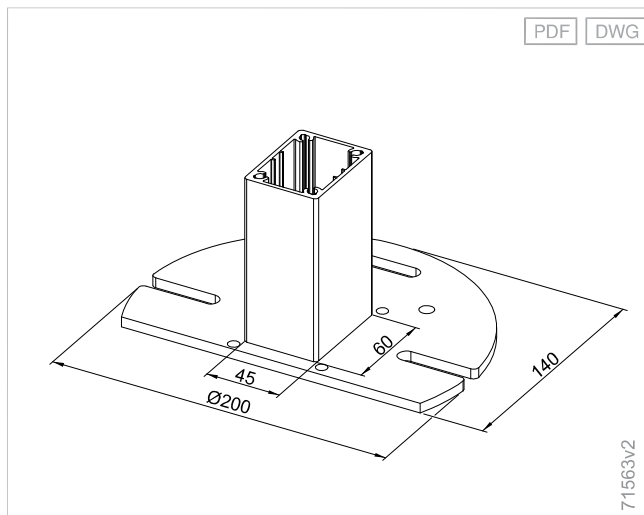
Supplementary
accessories

Components

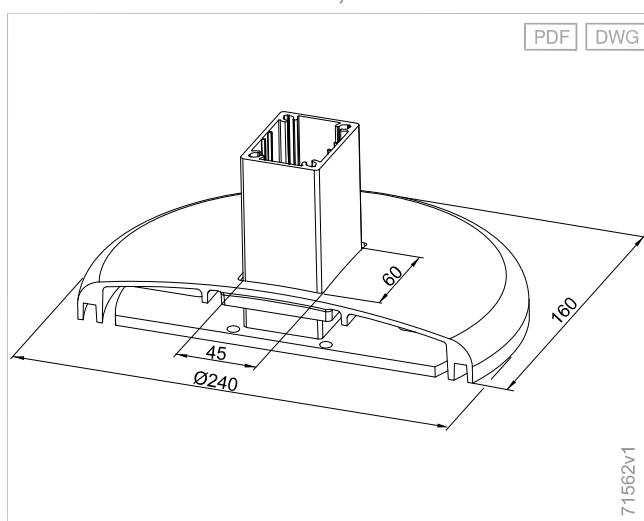
Drive
variants

Standards

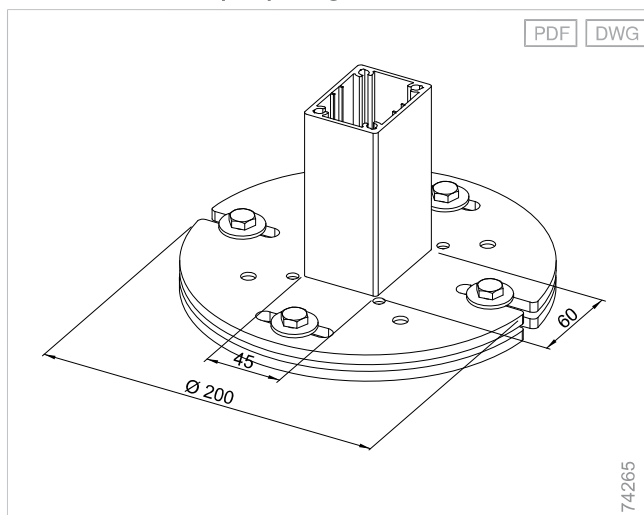
Pole fixing for reveal installation, front - P20/P40/P40 WE



Base cover for reveal installation, front - P40/P40 WE



P20/P40/P40 WE, adapter plate, ground screw



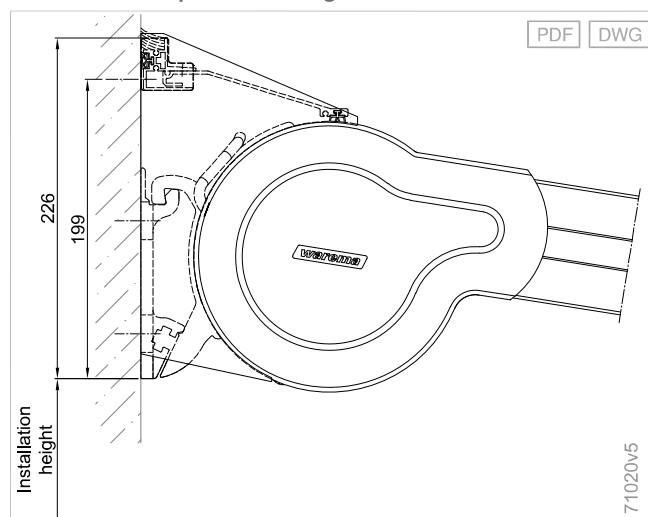
Additional product information

Pole installation options

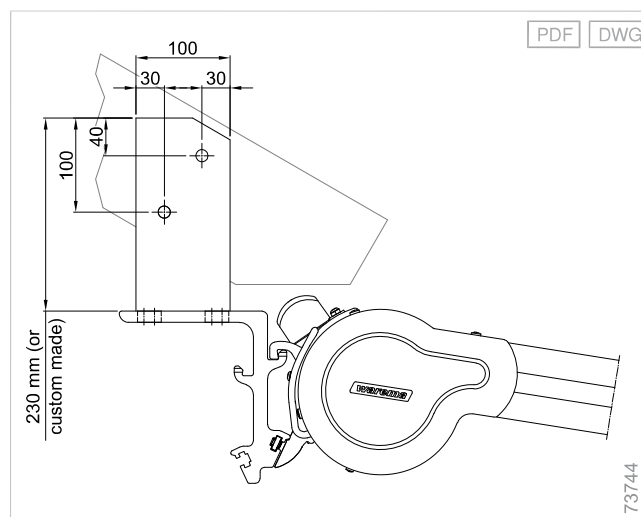
- Ground installation with frost-proof, on-site foundation, dimensions (WxDxH) 600×600×800 mm
- The grout for filling the clearance is not included in the scope of delivery when **threaded rods** are used

Mounting examples

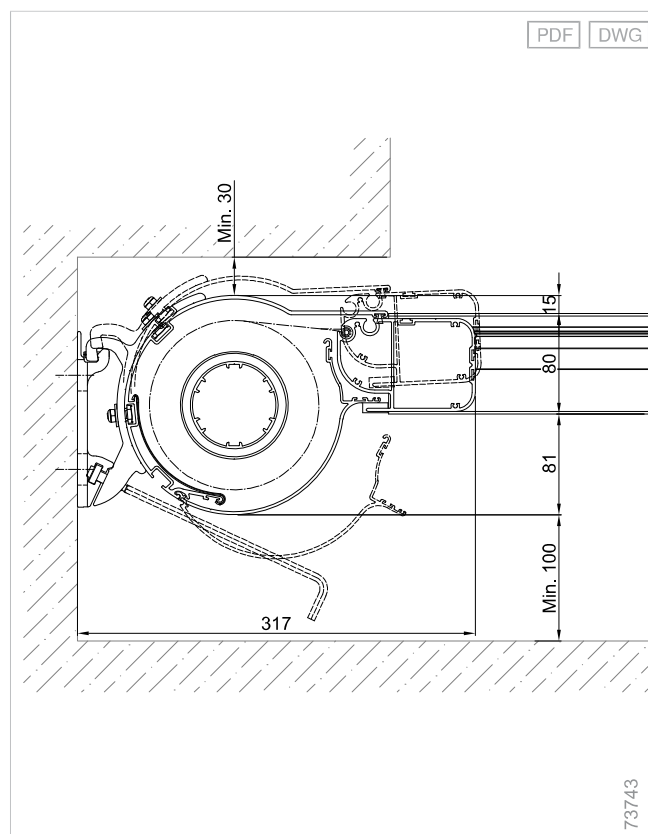
Wall connection profile with large rain hood



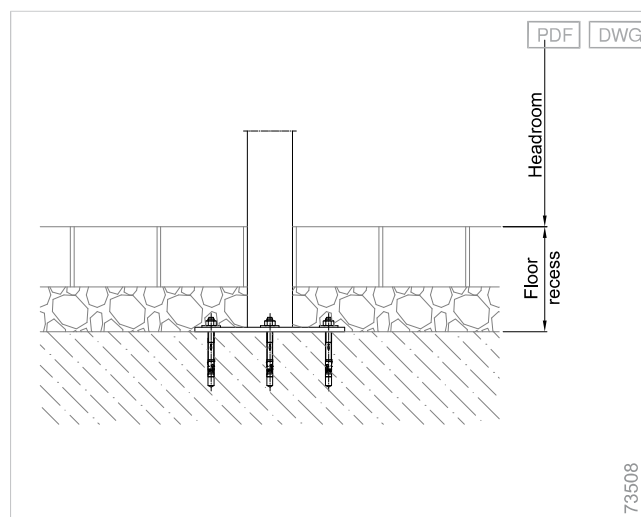
Rafter installation - P40 WeatherEdition



Installation space for wall installation, inclination 9° - P40 WeatherEdition



Fixing on concrete foundation without clearance - P20/P40/P40 WE



Planning

Terrea

Perea

Patio side screens

Climara

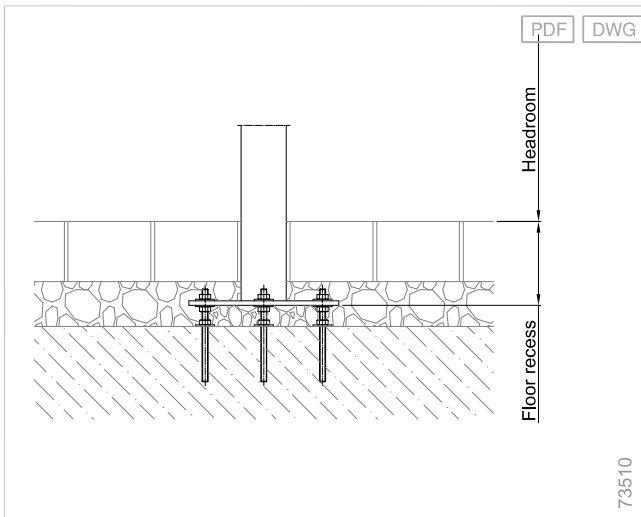
Supplementary accessories

Components

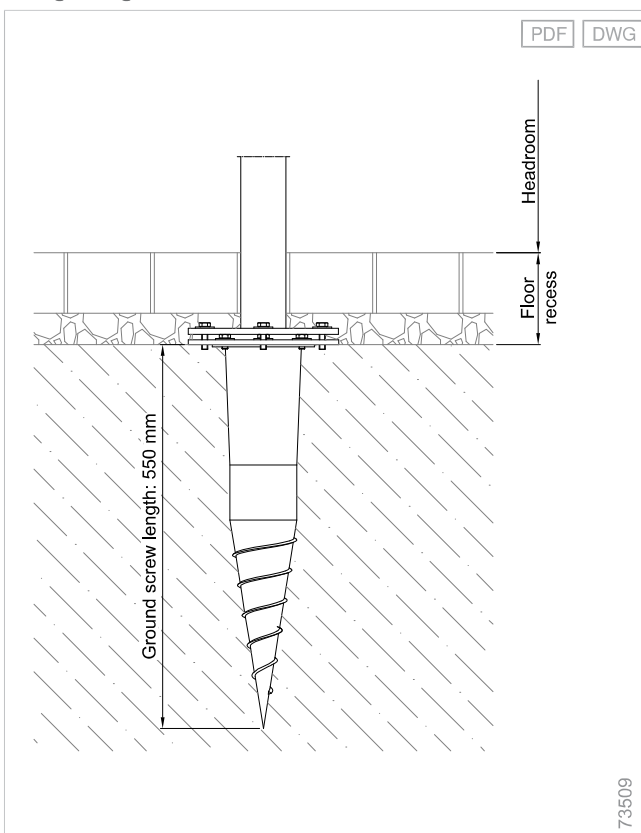
Drive variants

Standards

Fixing on concrete foundation with spacer - P20/P40/P40 WE



Fixing with ground screw - P20/P40/P40 WE



Krinner ground screws made of zinc-coated steel can be used to install the poles. The adapter plate for Krinner ground screw KSF 89x550 is required. The grout for filling the clearance is not included in the scope of delivery.