



# Pergola awnings Perea

## Pergola awnings Perea P40

### Exceptional

A special eye-catcher: The guide rails are not only available in straight but also in curved design.

### Stable

Functional and elegant: With secudrive® technology, the fabric runs tightly and securely on the rail - a fixed or travelling reinforcement profile additionally tensions the fabric.

### Customisable

The right accessories for every wish: For example, the optional LED lighting creates a cosy atmosphere in the evening.



reddot design award  
winner 2013

### Construction limit values

Maximum order width	6500 mm
Maximum order depth	7000 mm

### Order here

**myWAREMA**

[Art.-Nr. 2036165](#)

**Order form**

<https://docs.warema.com/fi/878225.pdf>

### WAREMA tools

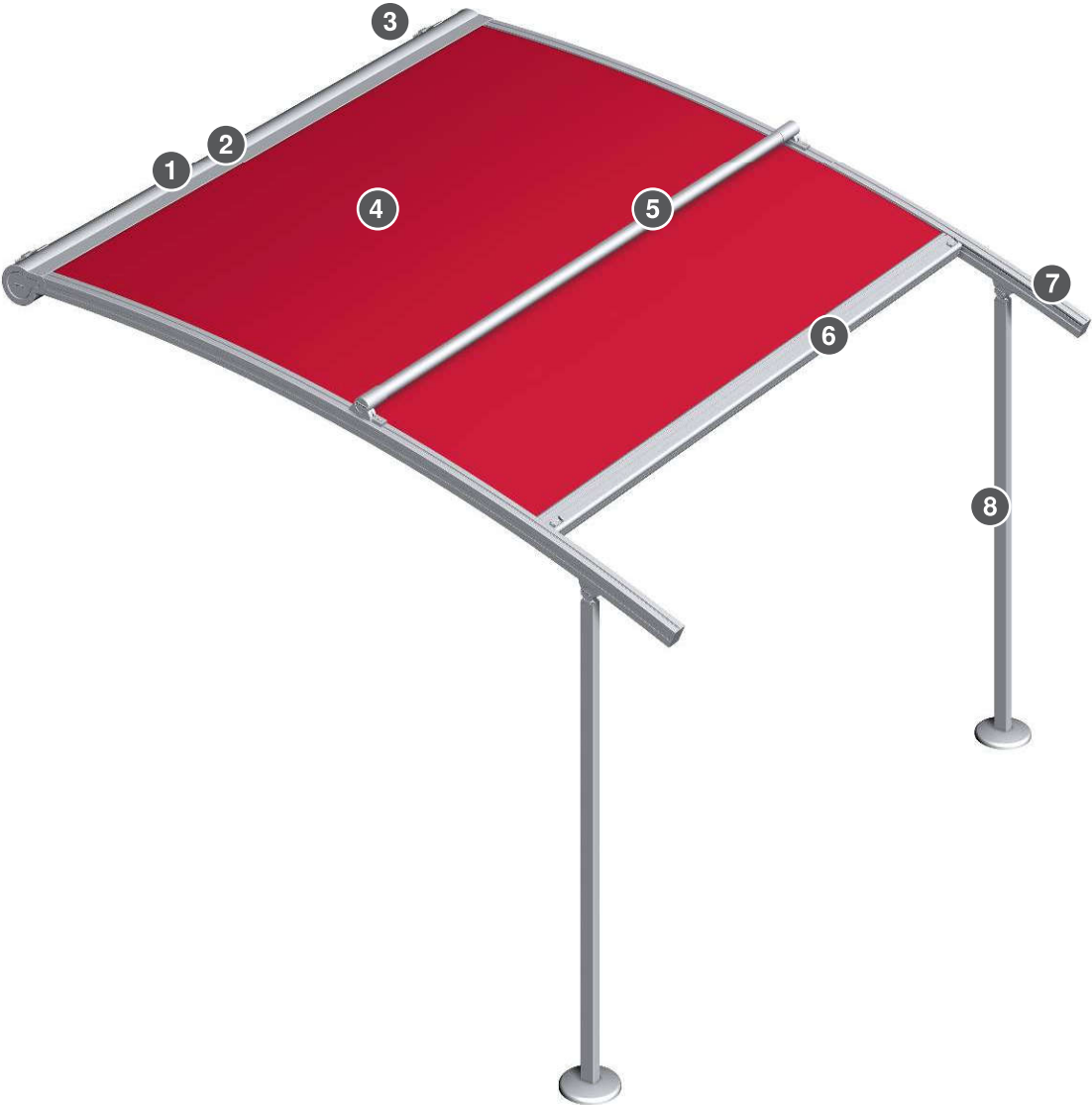
[Collection Assistant](#)

[Sun Shading Planner](#)

[see "Navigating the document", Page 5](#)

# Components

Perea P40 pergola awning



- 1     Cover panel
- 2     Shaft
- 3     Console
- 4     Awning fabric

- 5     Reinforcement profile
- 6     Front rail
- 7     Guide rail
- 8     Pole

## Cover panel

### Cover panel - P40/P40 WE/P60

Material	Aluminium, extruded
Surface	Powder-coated
Width	210 mm
Height	180 mm

## Shaft

### Motor shaft Ø 70 mm

Material	Aluminium
Surface	Plain
Profile	Round profile
Diameter	70 mm

### Fabric shaft Ø 86.2 mm

Material	Aluminium
Surface	Plain
Profile	Round profile
Diameter	86.2 mm

## Front rail

### Front rail - P40/P40 WE/P60

Material	Aluminium, extruded
Surface	Powder-coated
Width	113 mm
Height	74 mm

Planning

Terrea

Perea

Patio  
side screens

Climara

Supplementary  
accessories

Components

Drive  
variants

Standards

## Front rail, optional

### Front rail - P40 with valance roller blind

Material	Aluminium, extruded
Surface	Powder-coated
Width	113 mm
Height	74 mm

## Reinforcement profile

### Reinforcement profile Ø 60 mm

Material	Aluminium, extruded
Surface	Powder-coated
Diameter	60 mm

## Reinforcement profile, optional

### Travelling reinforcement profile Ø 60 mm - W20/P40

Material	Aluminium, extruded
Surface	Powder-coated
Diameter	60 mm

### Space required for travelling reinforcement profile:

The installation space for the travelling reinforcement profile is 134 mm from the top edge of the guide rail to the eaves, for example. For ceiling installation, this installation space must be manufactured with spacer consoles.

## Pole

### Pole - Perea

Maximum order height	2500 mm
Material	Aluminium, extruded
Surface	Powder-coated
Width	45 mm
Depth	60 mm

Notes on construction limit values:

Offset:

Max. 1/3 of order depth;

Max. 1200 mm; min. 105 mm

## Base plate

### Base plate - Ø 200 mm Perea

Material	Galvanised steel
Surface	Powder-coated
Diameter	200 mm

## Base cover, optional

### Base cover - P40/P40 WE

Material	Aluminium, permanent mould cast
Surface	Powder-coated
Height	35 mm
Diameter	240 mm

## Wall connection profile, optional

- Wall connection profile with large rain hood

⊕ see "Wall connection profiles", Page 459

## Console

### Wall console type A - 550/P40/P40 WE/P60

Material	Aluminium, extruded
Width	140 mm
Height	140 mm
Depth	29 mm

### Wall console type B - 550/P40/P40 WE/P60

Material	Aluminium, extruded
Width	185 mm
Height	140 mm
Depth	29 mm

Wall installation with 3 drilled holes

### Ceiling console type E - 550/P40/P40 WE/P60

Material	Aluminium, extruded
Surface	Powder-coated
Width	100 mm
Height	183 mm
Depth	182 mm

### Console for rafters type F - 550/P40/P40 WE/P60

Material	Aluminium
Surface	Powder-coated
Width	100 mm
Height	413 mm
Depth	182 mm

## Guide variants

- secudrive®

## Guide rail

### Guide rail - Perea curved

Material	Aluminium, extruded
Surface	Powder-coated
Width	65 mm
Height	80 mm

### Guide rail - Perea straight

Material	Aluminium, extruded
Surface	Powder-coated
Width	65 mm
Height	80 mm

## Drive variants

- Motor

## Motor

- WM REA

## Radio motor, optional

- WMS-PM (WMS)

⊕ see "Drive variants", Page 471

## Colours

- WAREMA Colour World

+ see "Colours and finishes", Page 10

## Fabric qualities

- Acrylic fabric

Fabric qualities, optional:

- All Weather acrylic
- Starlight Blue
- Soltis 92
- Twilight Pearl

+ see "Awning collection", Page 460

## Supplementary accessories

- WMS sensor system
- Pole, lowered vertically
- Drainage cutouts
- Valance roller blind with motor and storage battery and WMS control
- Valance roller blind with crank
- Wind protection for valance roller blind
- Integrated lighting
- LED strip light rail
- Radiant heater
- Patio frame

+ see "Supplementary accessories", Page 325

## Notes

### Planning permission

Pergola awnings require planning permission, depending on their overall size and the local regulations.

### Fixing of the radiant heater

It is not possible to fix the radiant heaters directly to Perea pergola awnings.

### Processing of Twilight Pearl

In awnings with a secudrive® guidance, the awning fabric is fastened to the spring steel strip with a fabric strip (light grey) visible at the side.

## Construction limit values

Configuration variants	Minimum order width	Maximum order width	Minimum order depth	Maximum order depth	Maximum order area	Minimum inclination angle	Maximum inclination angle
<b>Fabric qualities + Guide rail</b>							
Acrylic fabric / Starlight Blue + Guide rail - Perea curved	950 mm	6500 mm	800 mm	5000 mm	32,5 m <sup>2</sup>	0 °	45 °
Acrylic fabric / Starlight Blue + Guide rail - Perea straight	950 mm	6500 mm	800 mm	5000 mm	32,5 m <sup>2</sup>	0 °	45 °
Acrylic fabric / Starlight Blue + Guide rail - Perea straight	950 mm	5000 mm	800 mm	7000 mm	35 m <sup>2</sup>	0 °	45 °
Twilight Pearl + Guide rail - Perea curved	950 mm	6500 mm	800 mm	5000 mm	28 m <sup>2</sup>	0 °	45 °
Twilight Pearl + Guide rail - Perea straight	950 mm	6500 mm	800 mm	5000 mm	28 m <sup>2</sup>	0 °	45 °
Twilight Pearl + Guide rail - Perea straight	950 mm	5000 mm	800 mm	7000 mm	28 m <sup>2</sup>	0 °	45 °
Soltis 92 + Guide rail - Perea straight	950 mm	3500 mm	800 mm	4000 mm	14 m <sup>2</sup>	0 °	45 °

### Inclination:

- The **maximum order depth** refers to an inclination of 14°.

### Reinforcement profile:

- For order depths of 1401 mm or greater and curved guide rails, a reinforcement profile (fixed or travelling) is used.
- For order depths of 4001 mm or greater and straight guide rails, a reinforcement profile (fixed or travelling) is used.

### Series-mounted units:

- Generally, only individual units are possible, i.e. no unit coupling!
- The lining up of several pergola awnings is possible with a flush closure.
- Each awning section requires two single guide rails.
- The installation of two guide rails on one pole is possible with an adapter plate.
- In the case of a series-mounted unit, an expansion joint of 20 mm is required after 13000 mm!

## Dimensions

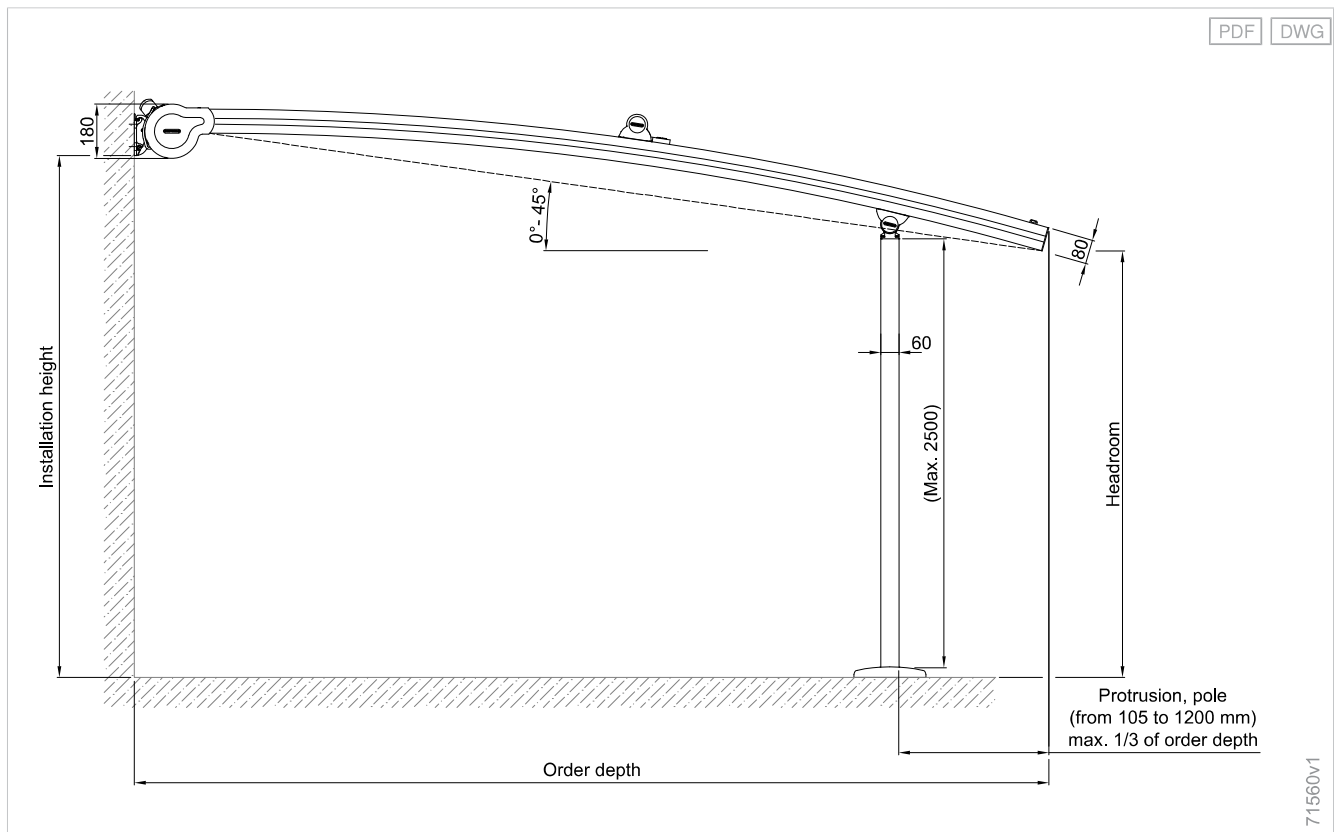
Weight per running metre: 20 - 24 kg/lfm

Weight per running metre, notes: Cover panel without consoles, without guide rails and poles.

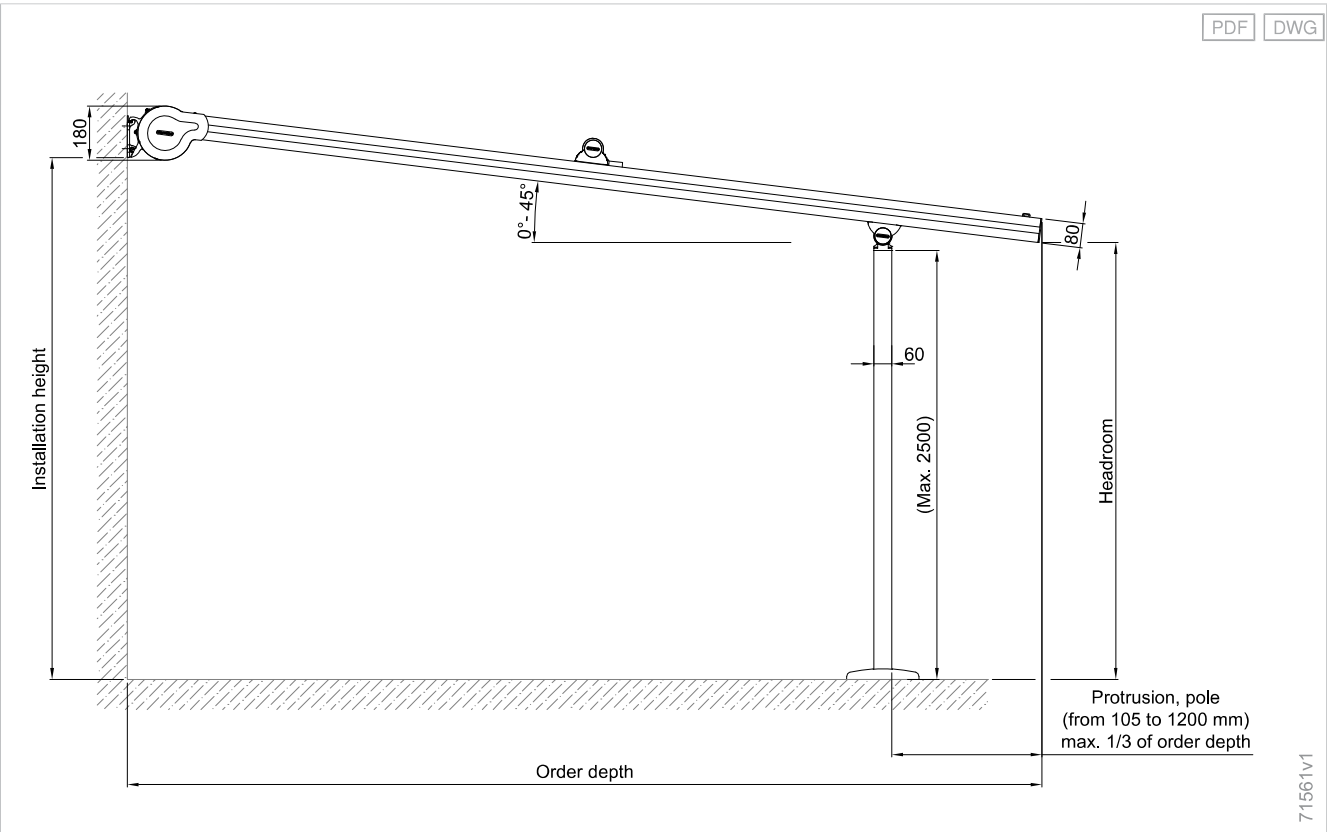
## Dimension determination

Determining the installation height differs for ceiling console!

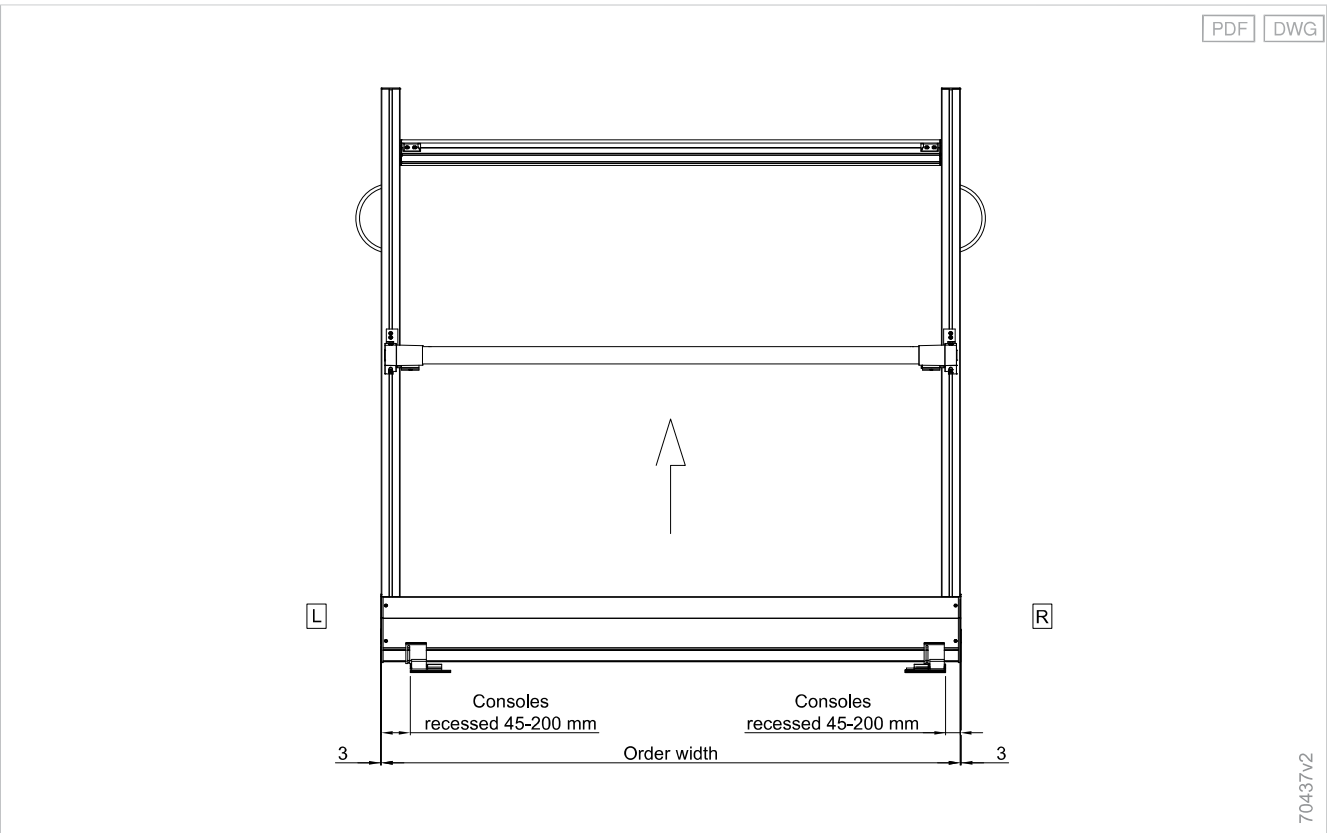
### Curved guide rail - P40

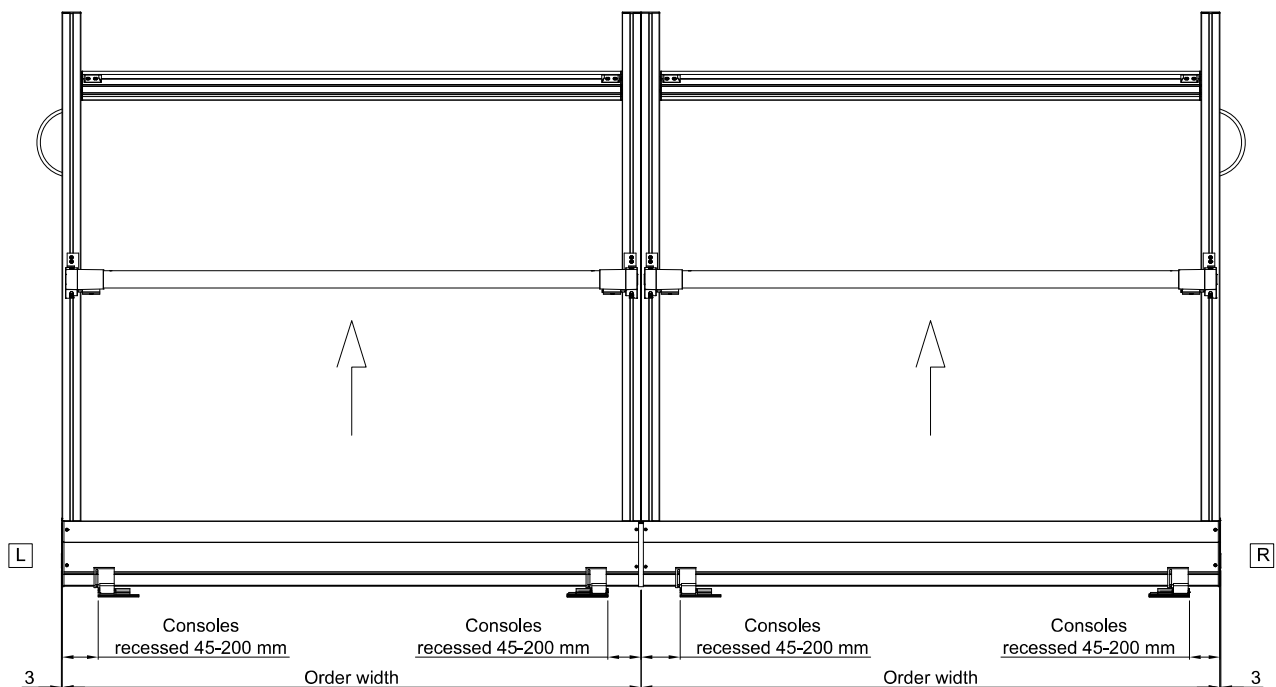
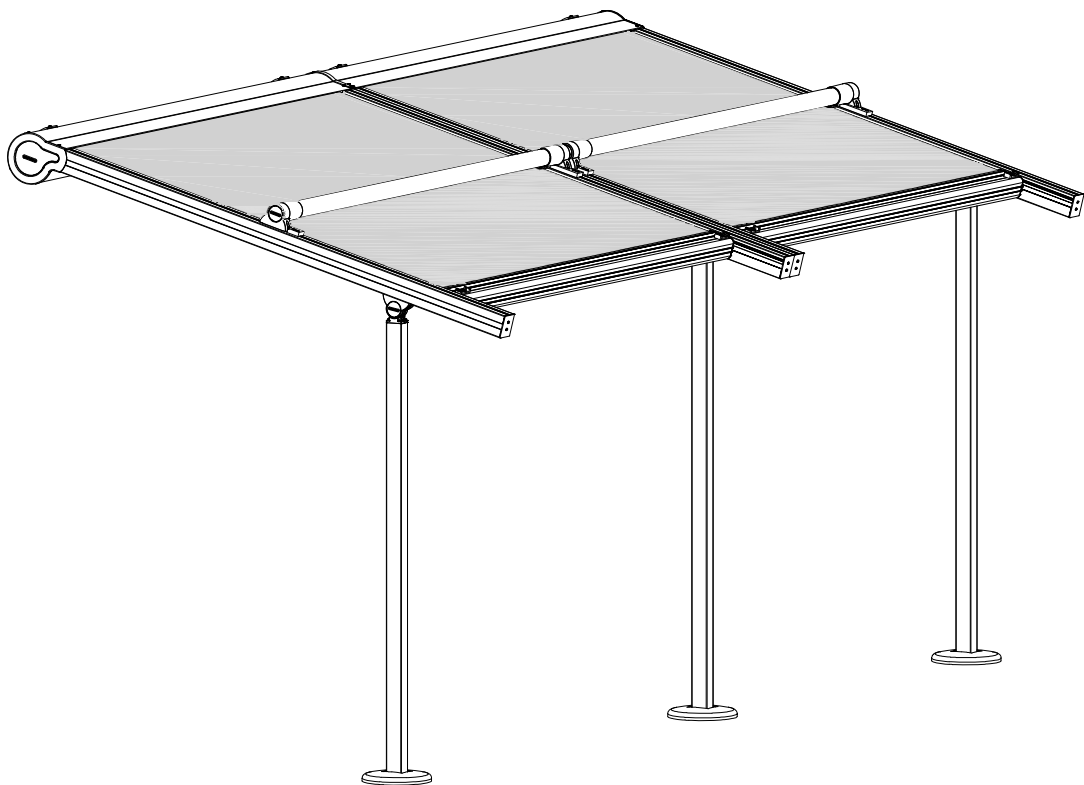


Straight guide rail - P40



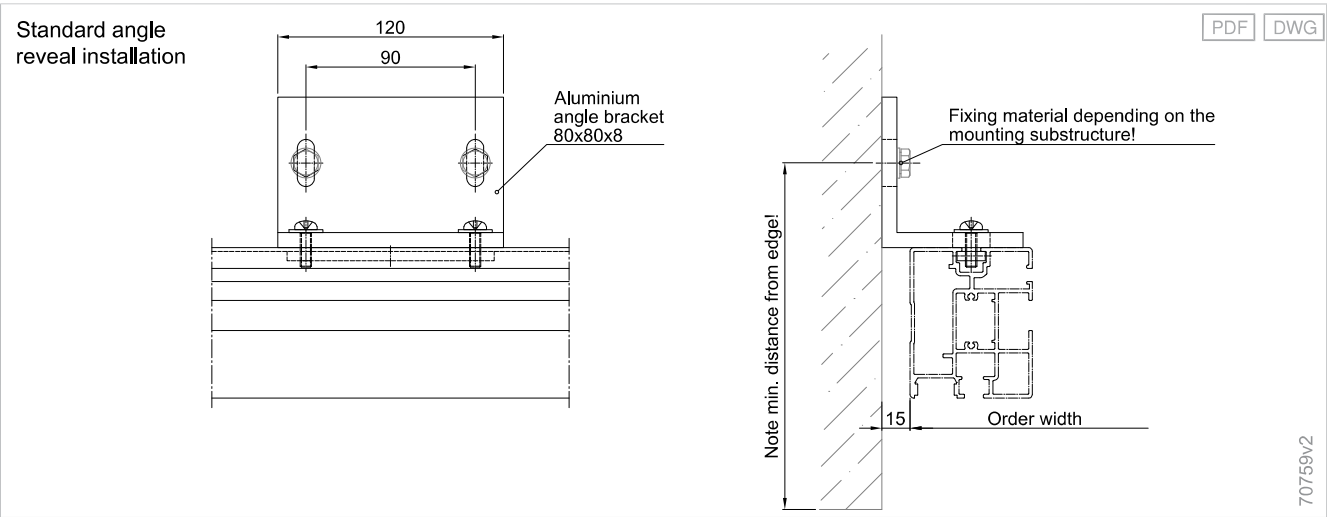
Top view for all guide rail models - P40



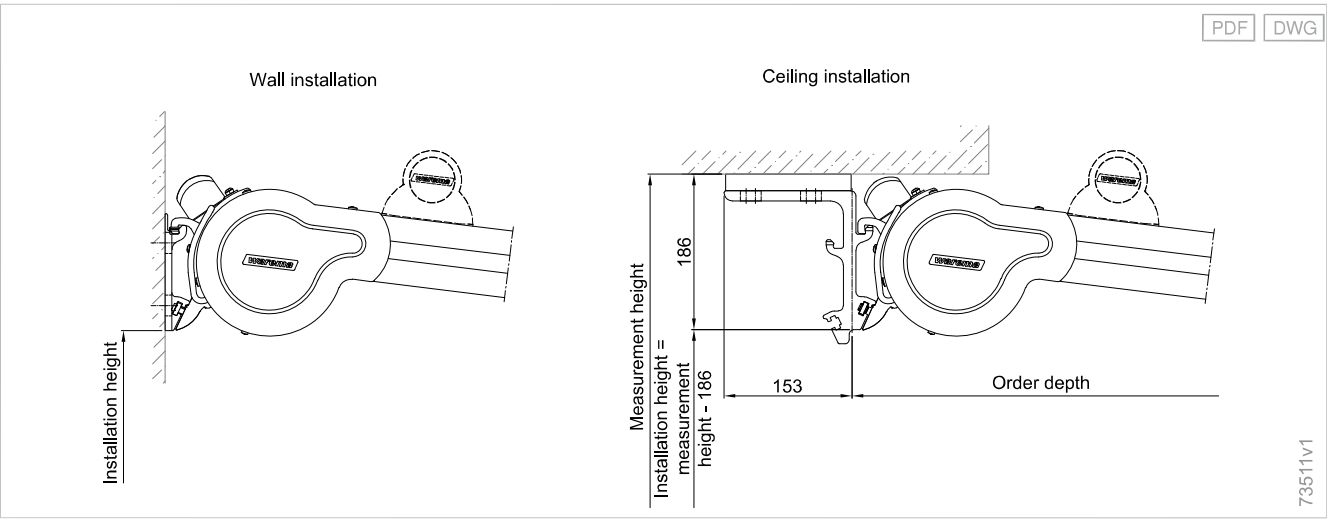


70438v1

Reveal installation



Determining the installation height for wall/ceiling console - P40



Planning

Terrea

Perea

Patio side screens

Climara

Supplementary accessories

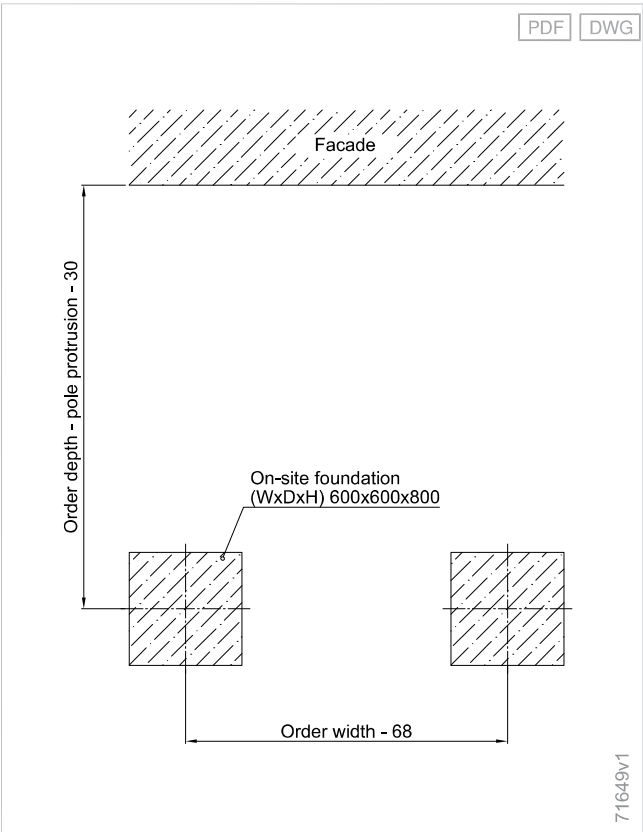
Components

Drive variants

Standards



Foundation plan



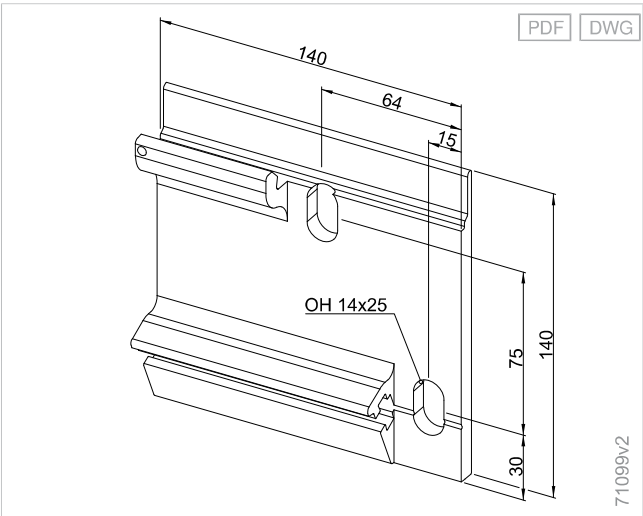
Quantity determination

Number of consoles, individual unit

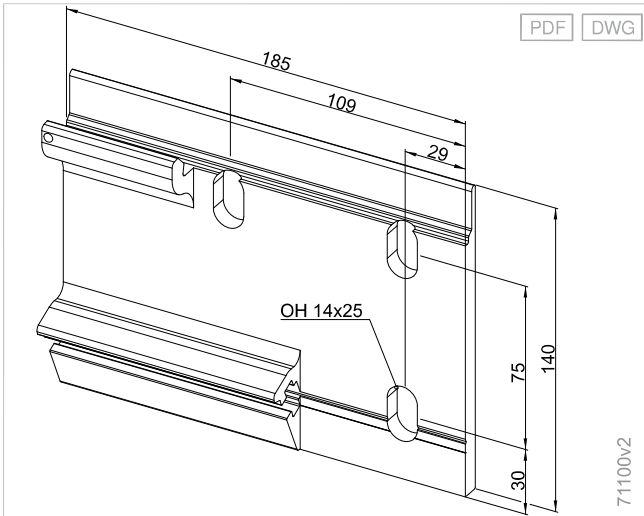
Configuration variants	Order depth	
	Order width	800 - 7000 mm
Console/Bracket		
Wall console / Ceiling console / Console for rafters	950 - 6500 mm	2

Details

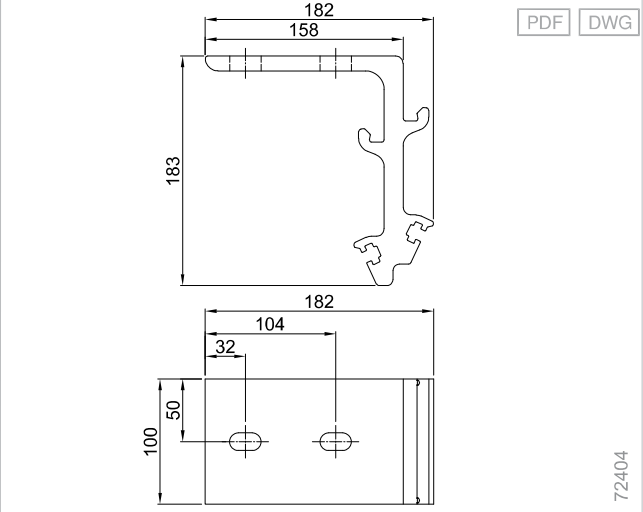
Wall console type A, right console; left console laterally reversed - 550/P40/P40 WE/P60



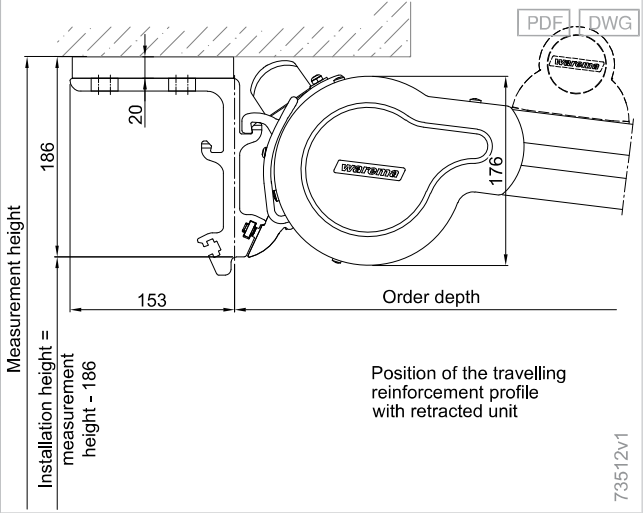
Wall console type B, right console; left console laterally reversed - 550/P40/P40 WE/P60



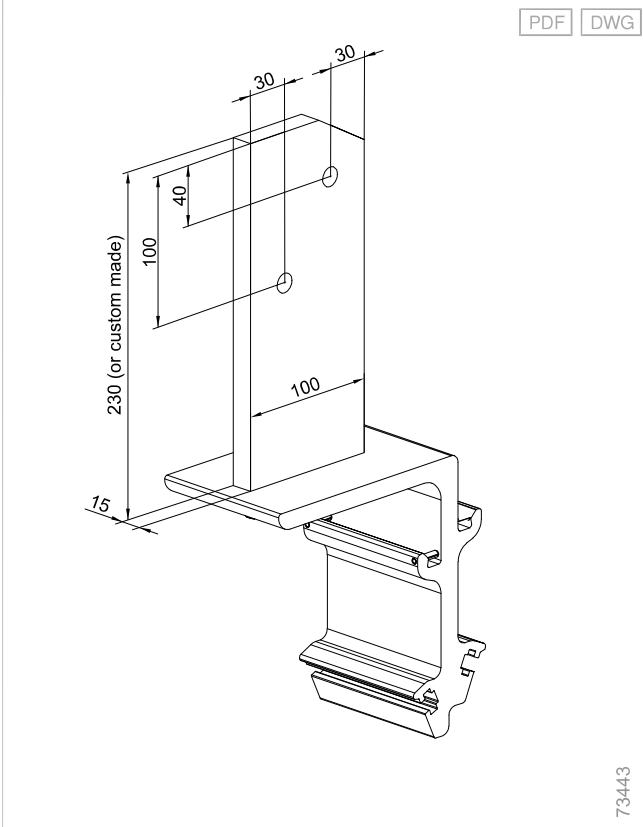
Ceiling console type E - 550/P40/P40 WE/P60



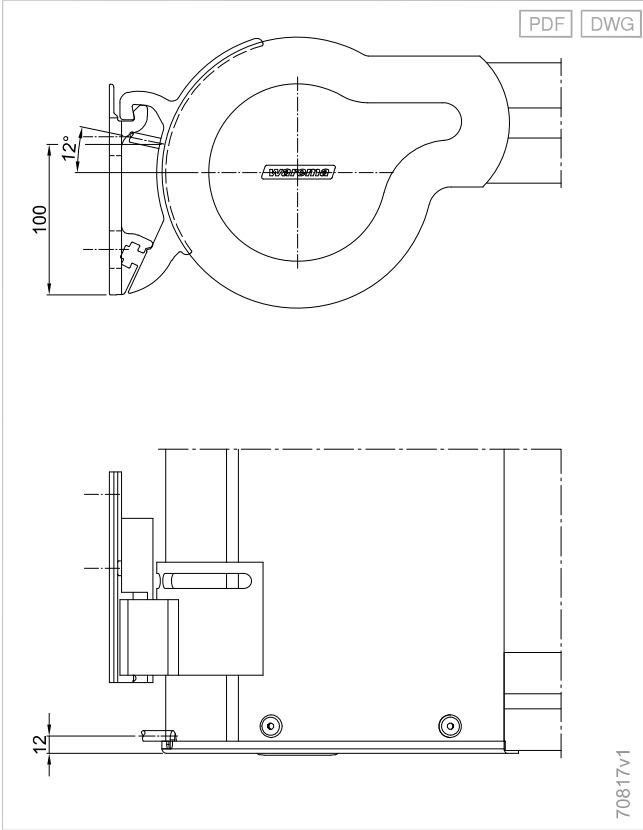
Ceiling installation (installation of the ceiling console only possible as shown) - P40



550/P40/P40 WE/P60, console for rafters type F



Cable exit - P40/P40 WE



Planning

Terrea

Perea

Patio  
side screens

Climara

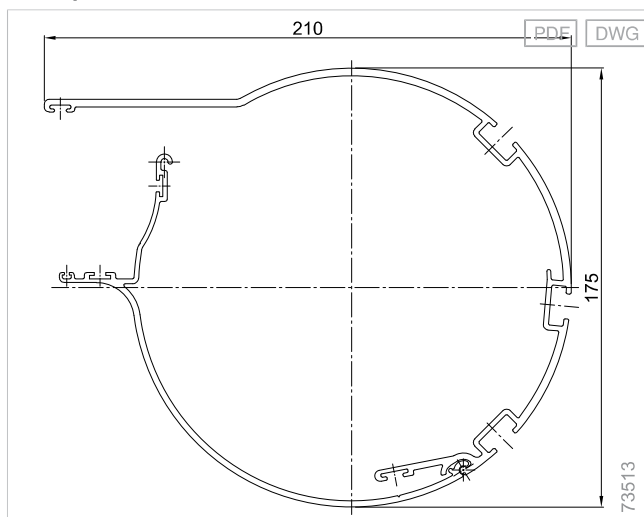
Supplementary  
accessories

Components

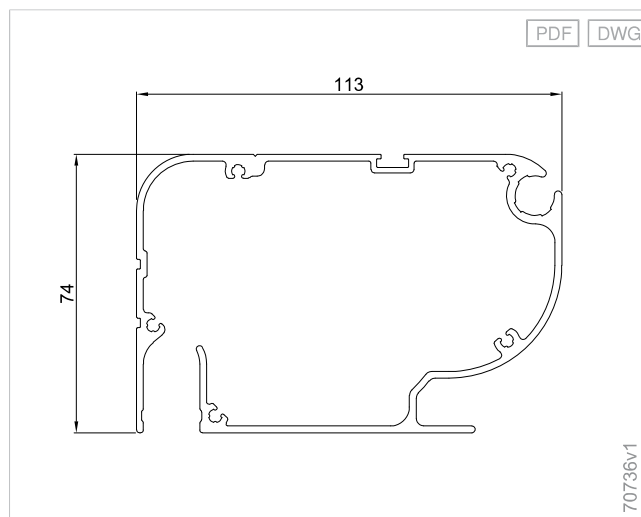
Drive  
variants

Standards

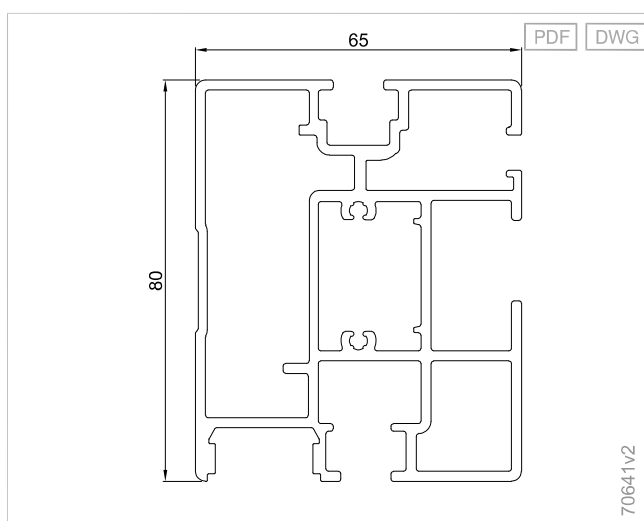
**Cover panel - P40/P40 WE/P60**



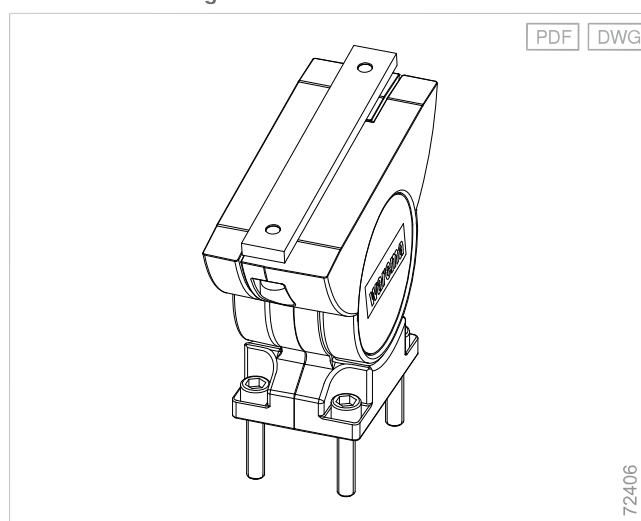
**Front rail for valance roller blind - P40**



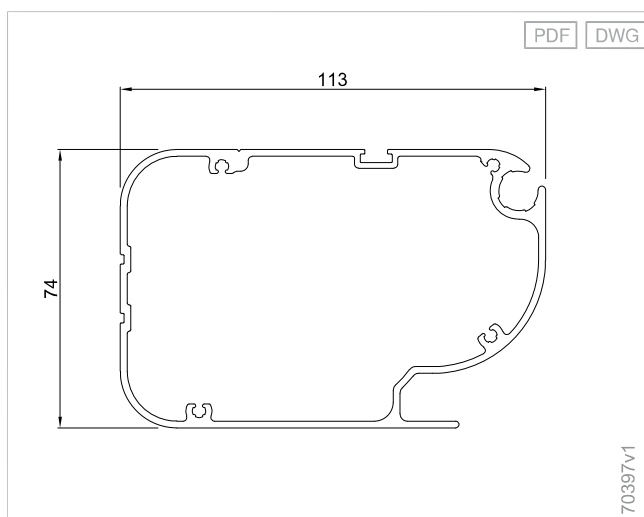
**Guide rail - P40/P40 WE/P60**



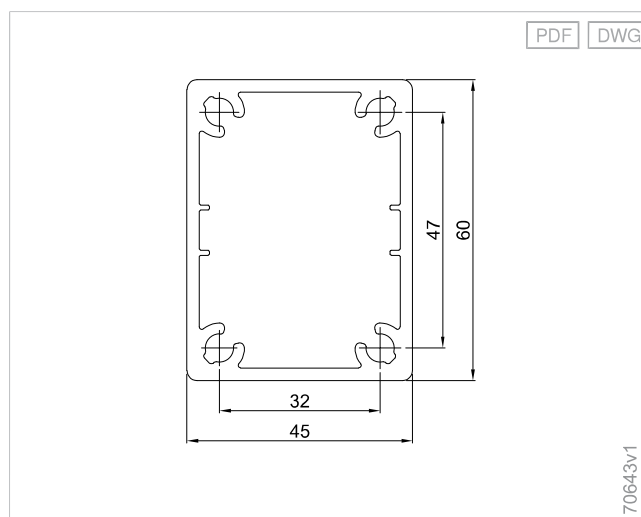
**Pole attachment to guide rail - P40/P40 WE**



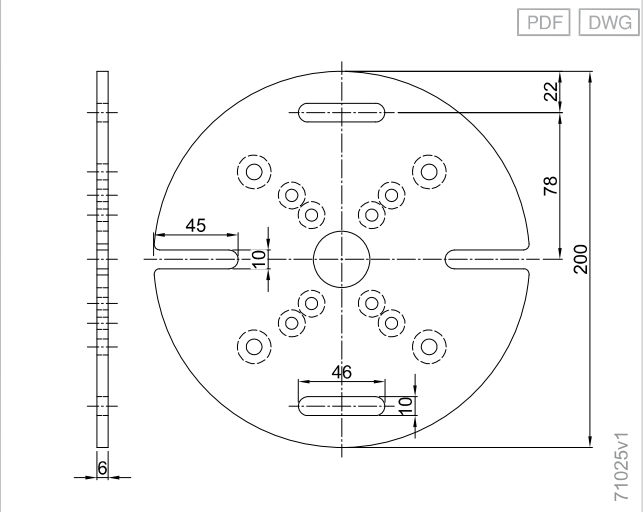
**Front rail - P40/P40 WE/P60**



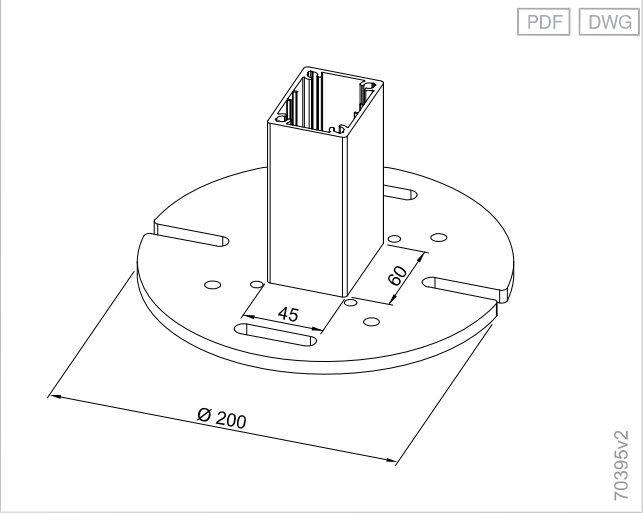
**Pole - P20/P40/P40 WE**



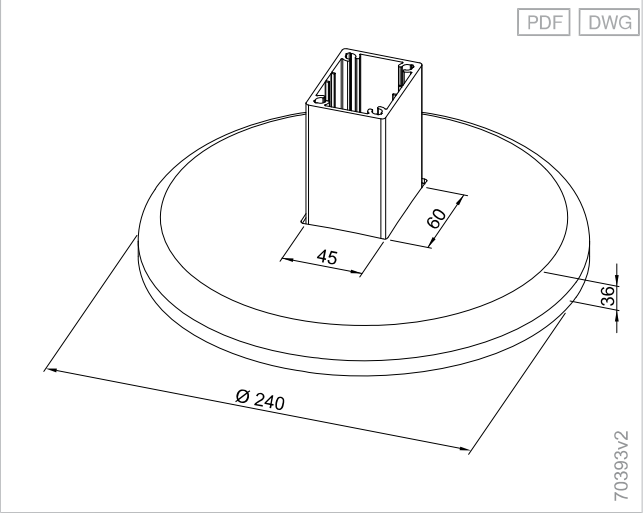
Pole fixing base plate - P20/P40/P40 WE/P60/P70



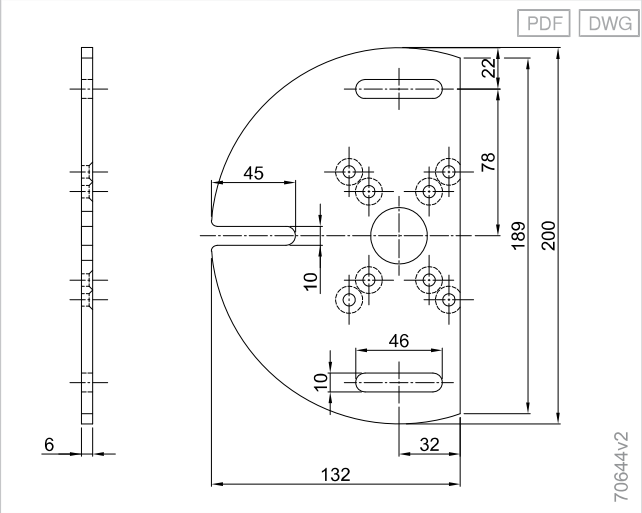
Pole fixing - P20/P40/P40 WE



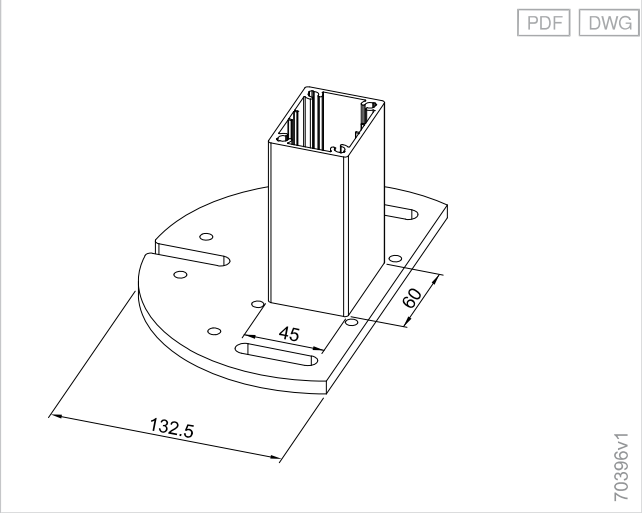
Base cover - P40/P40 WE



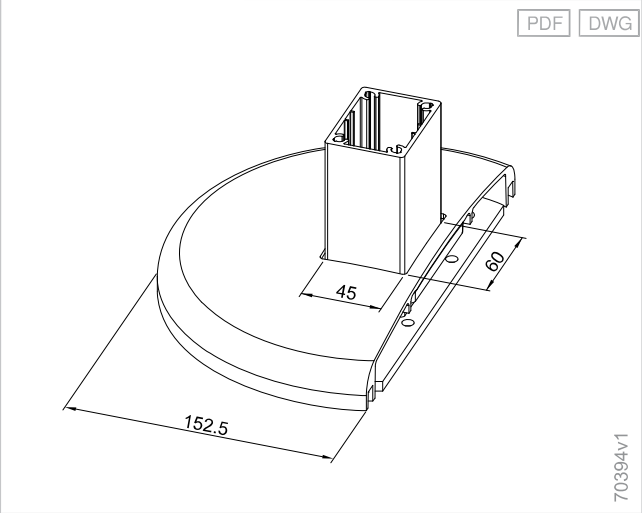
Pole fixing base plate for reveal installation, lateral - P20/P40/P40 WE



Pole fixing for lateral reveal installation - P20/P40/P40 WE



Base cover for lateral reveal installation - P40/P40 WE



Planning

Terrea

Perea

Patio  
side screens

Climara

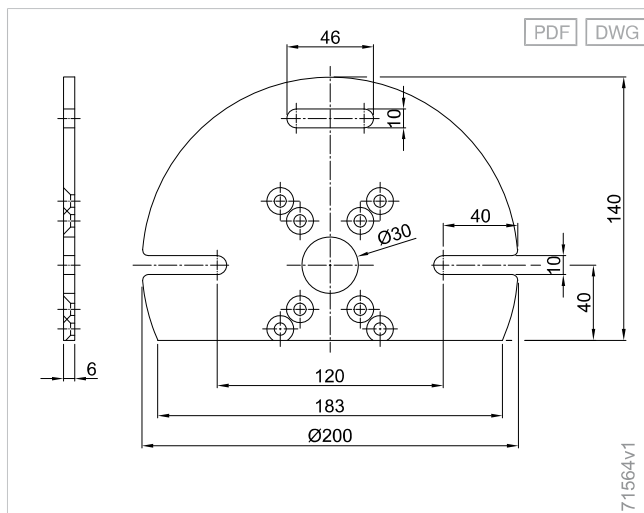
Supplementary  
accessories

Components

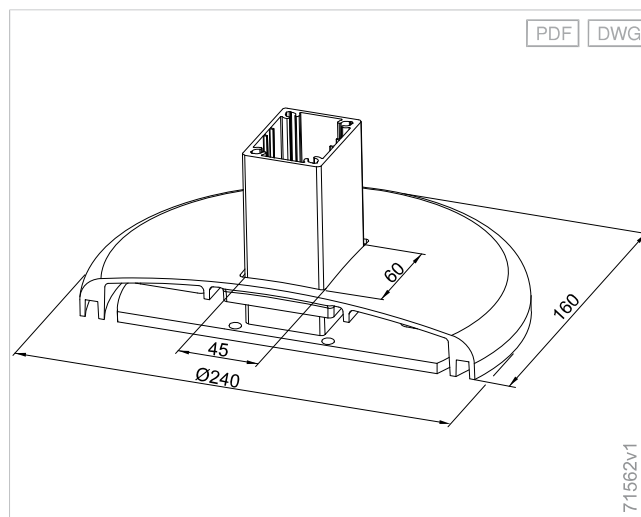
Drive  
variants

Standards

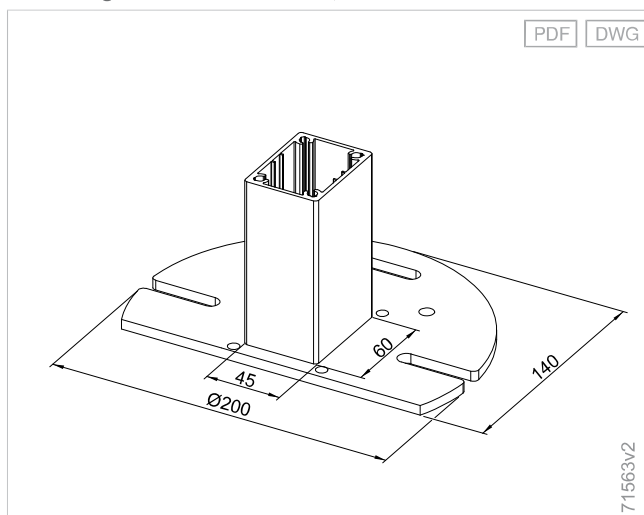
Pole fixing base plate for reveal installation, front - P20/P40/P40 WE



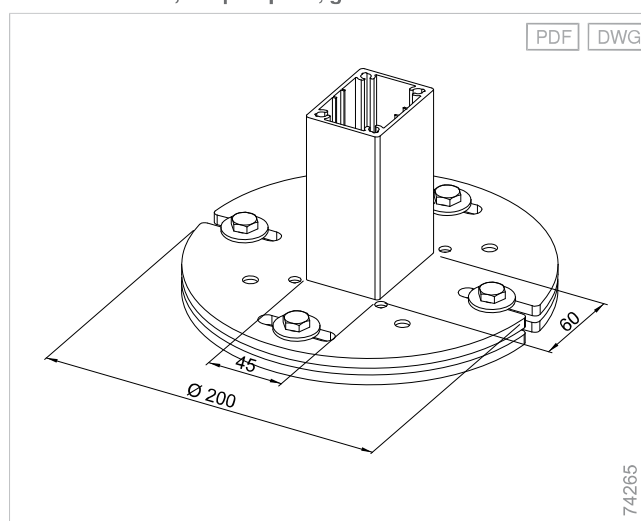
Base cover for reveal installation, front - P40/P40 WE



Pole fixing for reveal installation, front - P20/P40/P40 WE



P20/P40/P40 WE, adapter plate, ground screw



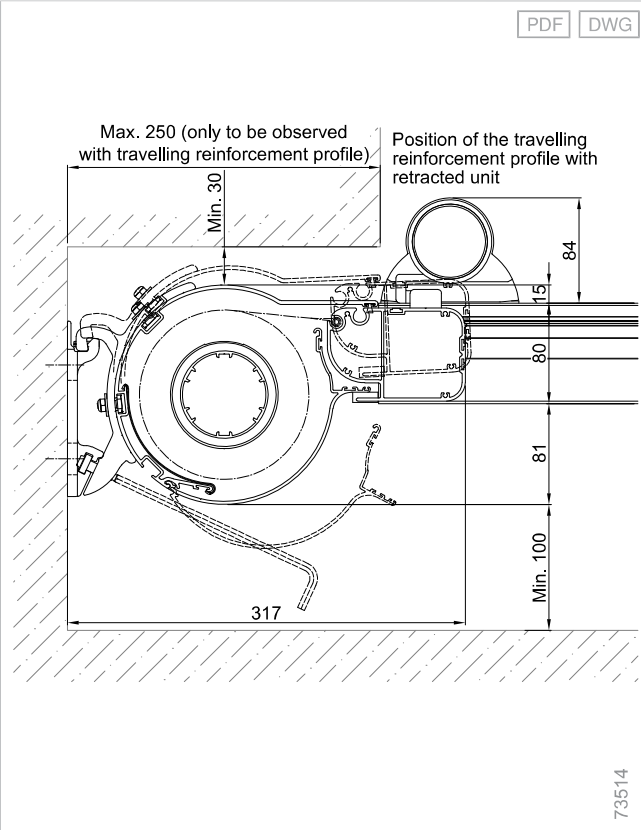
## Additional product information

### Pole installation options

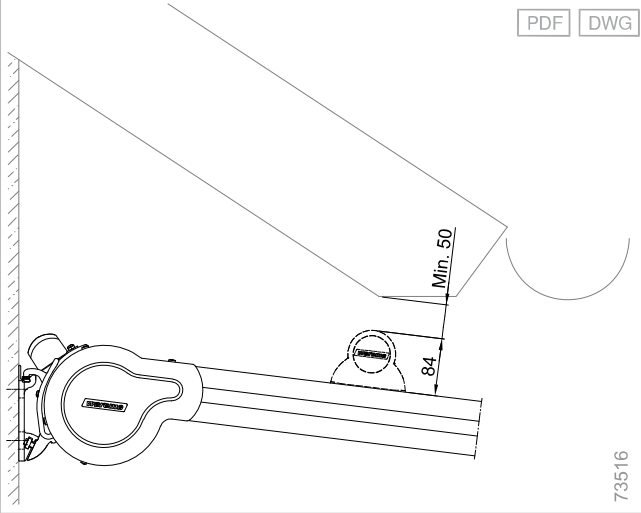
- Ground installation with frost-proof, on-site foundation, dimensions (WxDxH) 600×600×800 mm
- The grout for filling the clearance is not included in the scope of delivery when **threaded rods** are used

# Mounting examples

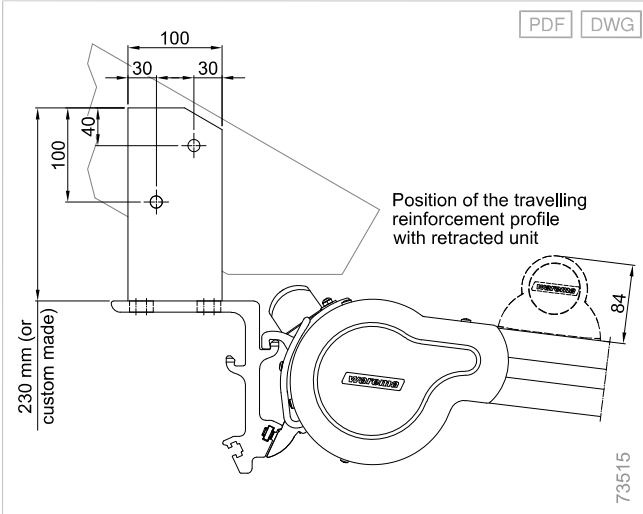
Installation space for wall installation, inclination 0° - P40



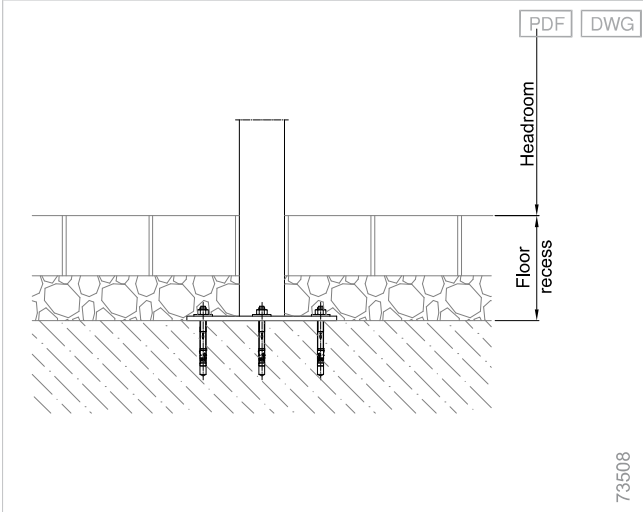
Installation space for travelling reinforcement profile - P40



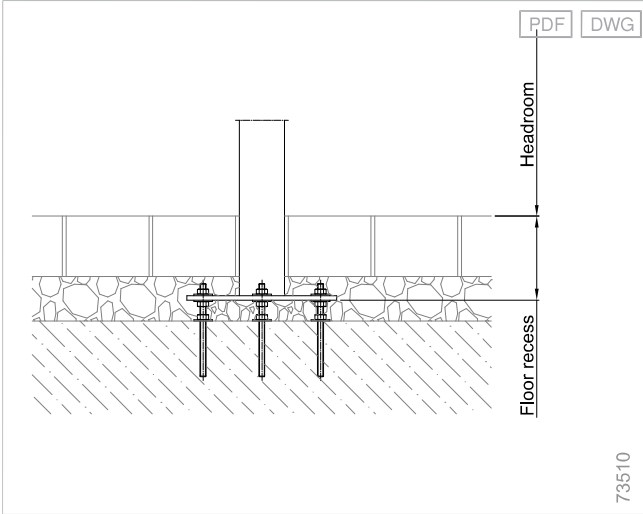
Rafter installation - P40



Fixing on concrete foundation without clearance - P20/P40/P40 WE



Fixing on concrete foundation with spacer - P20/P40/P40 WE



Planning

Terrea

Perea

Patio side screens

Climara

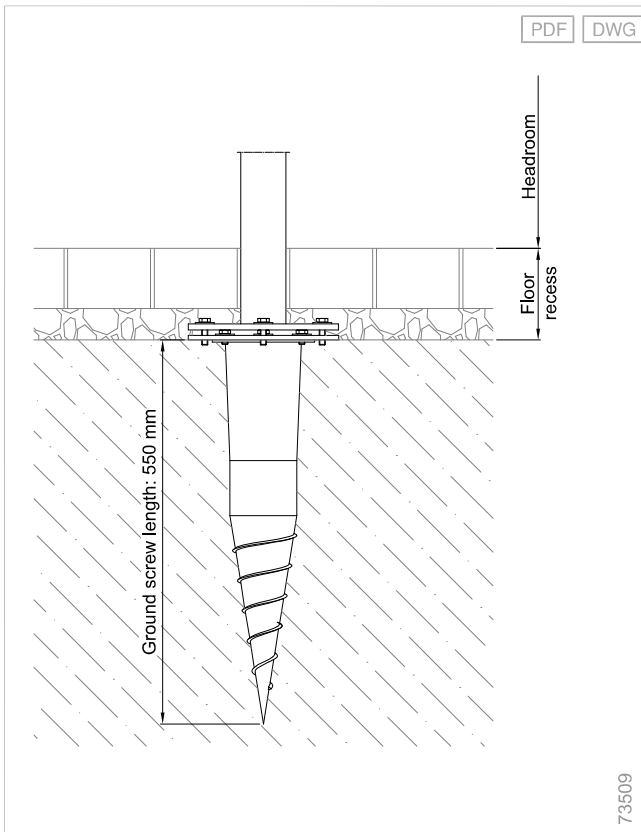
Supplementary accessories

Components

Drive variants

Standards

## Fixing with ground screw - P20/P40/P40 WE



Krinner ground screws made of zinc-coated steel can be used to install the poles. The adapter plate for Krinner ground screw KSF 89x550 is required. The grout for filling the clearance is not included in the scope of delivery.